

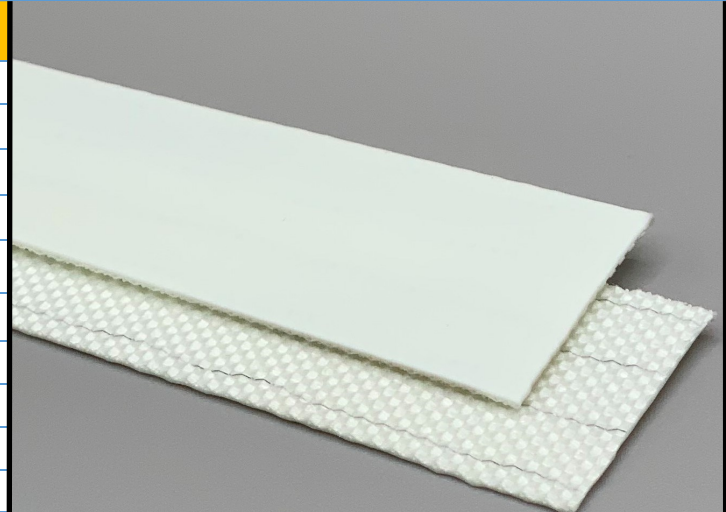
100119

U85/1E-AS G White

PU

Material Construction

Surface	Conveying	Material	PU
		Profile	Glossy
		Color	White
		Coefficient of friction	N/A
Tension Member	Material	Polyester Fabric	
	Plies	1	
Underside	Material	Polyester Fabric	
	Profile	PU Impregnated	
	Color	Transparent	
	Coefficient of friction	0.25	



Technical Specifications

Overall Thickness	0.60 mm	0.024 in.
Weight	0.65 kg/m ²	0.13 lbs./ft ²
Maximum Width	3,200 mm	126.00 in.
Minimum Pulley/Nose Bar		
Diameter for Recommended Endless Splice	6.00 mm	0.236 in.
Minimum Back Flex	8.00 mm	0.315 in.
Load for 1% Extension (Dynamic)	3 N/mm	17.13 lbs./in.
Standard Tension		0.5 %
Product Operational Temperature Range	-30/100 °C	-22/212 °F
Cover Durometer	85 Shore A	

Features

FDA	YES	Anti-Static	YES
USDA Meat and Poultry	NO	Flame Retardant	NO
USDA Dairy	NO	Cross Rigid	YES
Anti-Microbial	NO		

Standard Fabrications

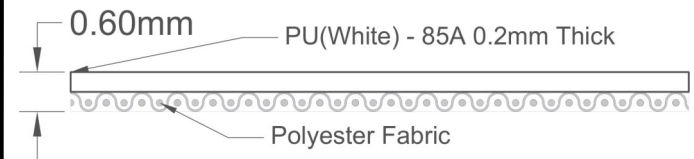
Longitudinal Splice	NO	Cleats	NO
Guide Applied to Cover	YES	Guide Applied to Bottom	YES
Footed Sidewall	NO	Footless Sidewall	NO
Edge Capped	NO	Plastic Spiral Lace	YES

Notes

Gloss finish top surface provides optimal grip for many food product transfers, slight inclines and general transport. Surface is easily cleaned and antistatic properties help reduce buildup and carry back. Minimal thickness construction for optimal cooling effectiveness and efficiency.

*Minimum pulley diameters can vary when mechanical lace is installed. Contact our technical team for any fabrication or application questions.

Material Build



Splicing Instructions

High Speed Press Settings

Pressure (psi)	Temperature		Press Time	Foil Position	Foil	Release Top/Bot.
	Top	Bottom				
20	160°C 320°F	160°C 320°F	90 s	Top	White PU	Gloss/Rough Teflon

Water Cooled Press Settings

Pressure (psi)	Temperature		Press Time	Foil Position	Foil	Release Top/Bot.
	Top	Bottom				
20	160°C 320°F	160°C 320°F	10 s	Top	White PU	Gloss/Rough Teflon

*These settings are a guideline only, every press is different. Test splicing is recommended.

Standard Splices

Endless	Single Finger
Clipper Lace	UCM36SL XSP w/ Folded Ends
Staple Lace	N/A

