

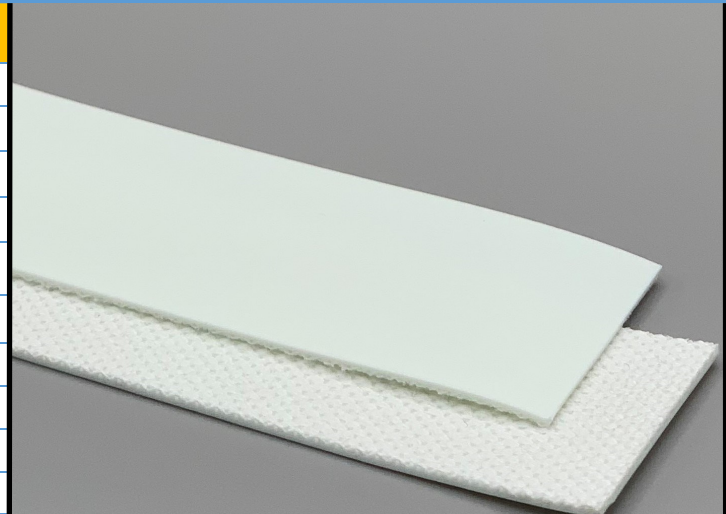
100130

U-SI/1ENF UR M White

PU

Material Construction

Surface	Conveying	Material	PU/Silicone Blend
		Profile	Matt
		Color	White
		Coefficient of friction	N/A
Tension Member		Material	Non-Fray Polyester Fabric
		Plies	1
Underside		Material	Non-Fray Polyester Fabric
		Profile	PU Impregnated
		Color	White
		Coefficient of friction	0.25



Technical Specifications

Overall Thickness	1.20 mm	0.047 in.
Weight	1.20 kg/m ²	0.25 lbs./ft ²
Maximum Width	3,200 mm	126.00 in.
Minimum Pulley/Nose Bar		
Diameter for Recommended Endless Splice	8.00 mm	0.315 in.
Minimum Back Flex	16.00 mm	0.63 in.
Load for 1% Extension (Dynamic)	6 N/mm	34.26 lbs./in.
Standard Tension		0.5 %
Product Operational Temperature Range	-20/100 °C	-4/212 °F
Cover Durometer	85 Shore A	

Features

FDA	YES	Anti-Static	NO
USDA Meat and Poultry	NO	Flame Retardant	NO
USDA Dairy	NO	Cross Rigid	YES
Anti-Microbial	NO		

Standard Fabrications

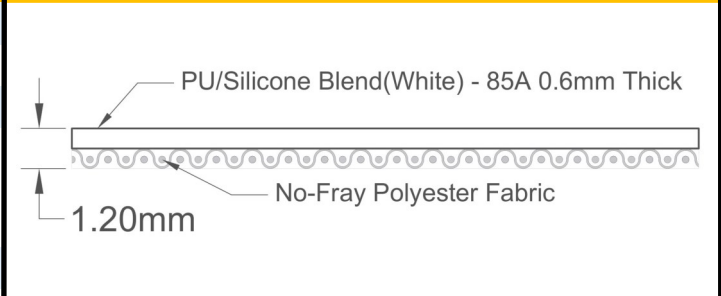
Longitudinal Splice	NO	Cleats	NO
Guide Applied to Cover	NO	Guide Applied to Bottom	YES
Footed Sidewall	NO	Footless Sidewall	NO
Edge Capped	NO	Plastic Spiral Lace	NO

Notes

Abrasive resistant top cover with excellent release qualities enhanced by recommended use of a belt scraper.

*Minimum pulley diameters can vary when mechanical lace is installed. Contact our technical team for any fabrication or application questions.

Material Build



Splicing Instructions

High Speed Press Settings

Pressure (psi)	Temperature		Press Time	Foil Position	Foil	Release Top/Bot.
	Top	Bottom				
20	160°C 320°F	160°C 320°F	90 s	Bottom	White PU	Matte/ Rough Teflon

Water Cooled Press Settings

Pressure (psi)	Temperature		Press Time	Foil Position	Foil	Release Top/Bot.
	Top	Bottom				
20	160°C 320°F	160°C 320°F	10 s	Bottom	White PU	Matte/ Rough Teflon

*These settings are a guideline only, every press is different. Test splicing is recommended.

Standard Splices

Endless	Single Finger
Clipper Lace	UCM36SP w/ Folded Ends
Staple Lace	N/A

