

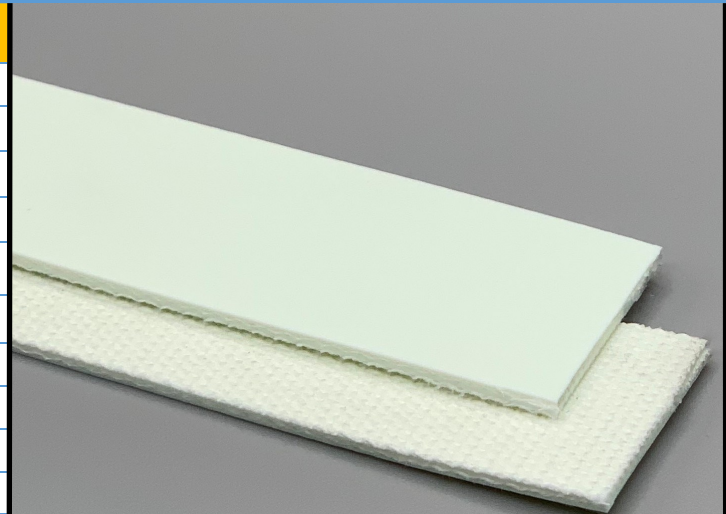
110215

U85/2ES White Gloss

PU

Material Construction

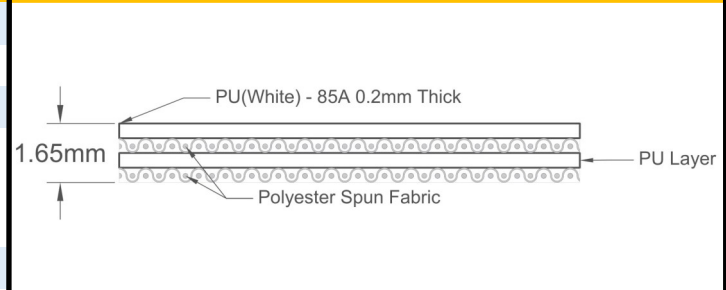
Surface	Conveying	Material	PU
		Profile	Glossy
		Color	White
		Coefficient of friction	N/A
Tension Member	Material	Spun Polyester Fabric	
	Plies	2	
Underside	Material	Spun Polyester Fabric	
	Profile	PU Impregnated	
	Color	White	
	Coefficient of friction	0.25	



Technical Specifications

Overall Thickness	1.65 mm	0.065 in.
Weight	1.75 kg/m ²	0.36 lbs./ft ²
Maximum Width	3,099 mm	122.00 in.
Minimum Pulley/Nose Bar		
Diameter for Recommended Endless Splice	10.00 mm	0.394 in.
Minimum Back Flex	25.00 mm	0.984 in.
Load for 1% Extension (Dynamic)	6 N/mm	34.26 lbs./in.
Standard Tension		0.5 %
Product Operational Temperature Range	-30/80 °C	-22/176 °F
Cover Durometer	85 Shore A	

Material Build



Features

FDA	YES	Anti-Static	NO
USDA Meat and Poultry	NO	Flame Retardant	NO
USDA Dairy	NO	Cross Rigid	NO
Anti-Microbial	NO		

Standard Fabrications

Longitudinal Splice	NO	Cleats	YES
Guide Applied to Cover	YES	Guide Applied to Bottom	YES
Footed Sidewall	YES	Footless Sidewall	NO
Edge Capped	YES	Plastic Spiral Lace	YES

Notes

2 Ply Spun Fabric - Cover one Side with PU Inner Layer. Suitable for Curve Belts, Metal Detectors And General Bakery and Confectionary Lines.

*Minimum pulley diameters can vary when mechanical lace is installed. Contact our technical team for any fabrication or application questions.

Splicing Instructions

High Speed Press Settings

Pressure (psi)	Temperature		Press Time	Foil Position	Foil	Release Top/Bot.
	Top	Bottom				
25	165°C 329°F	165°C 329°F	90 s	Top	White PU	Gloss/Rough Teflon

Water Cooled Press Settings

Pressure (psi)	Temperature		Press Time	Foil Position	Foil	Release Top/Bot.
	Top	Bottom				
25	165°C 329°F	165°C 329°F	45 s	Top	White PU	Gloss/Rough Teflon

*These settings are a guideline only, every press is different. Test splicing is recommended.

Standard Splices

Endless	Single Finger
Clipper Lace	UCM36 SP
Staple Lace	RS62

