

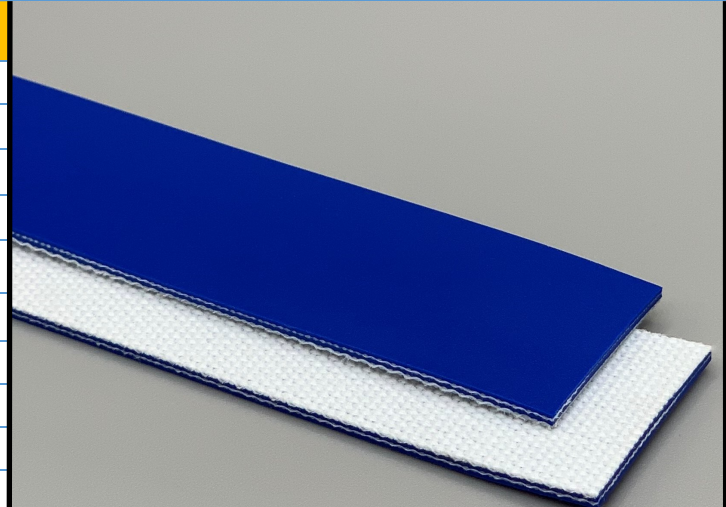
**110225**

**U85/2 ES M Cobalt Blue**

**PU**

**Material Construction**

Surface	Conveying	Material	PU
		Profile	Matt
		Color	Blue
		Coefficient of friction	N/A
Tension Member	Material	Spun Polyester Fabric	
	Plies	2	
Underside	Material	Spun Polyester Fabric	
	Profile	Impregnated	
	Color	White	
	Coefficient of friction	0.25	



**Technical Specifications**

Overall Thickness	1.65 mm	0.065 in.
Weight	1.80 kg/m <sup>2</sup>	0.37 lbs./ft <sup>2</sup>
Maximum Width	3,000 mm	118.13 in.
Minimum Pulley/Nose Bar		
Diameter for Recommended Endless Splice	10.00 mm	0.394 in.
Minimum Back Flex	25.00 mm	0.984 in.
Load for 1% Extension (Dynamic)	8 N/mm	45.68 lbs./in.
Standard Tension		0.5 %
Product Operational Temperature Range	-30/90 °C	-22/194 °F
Cover Durometer	85 Shore A	

**Features**

FDA	YES	Anti-Static	NO
USDA Meat and Poultry	NO	Flame Retardant	NO
USDA Dairy	NO	Cross Rigid	NO
Anti-Microbial	NO		

**Standard Fabrications**

Longitudinal Splice	NO	Cleats	YES
Guide Applied to Cover	YES	Guide Applied to Bottom	YES
Footed Sidewall	YES	Footless Sidewall	NO
Edge Capped	YES	Plastic Spiral Lace	YES

**Notes**

2 ply spun fabric matte top cover. Suitable for curve belts, metal detectors, general bakery and confectionary lines. Excellent for older and problematic equipment.

\*Minimum pulley diameters can vary when mechanical lace is installed. Contact our technical team for any fabrication or application questions.

**Material Build**



**Splicing Instructions**

**High Speed Press Settings**

Pressure (psi)	Temperature		Press Time	Foil Position	Foil	Release Top/Bot.
	Top	Bottom				
25	165°C 329°F	165°C 329°F	90 s	Top	Blue PU	Matte/ Rough Teflon

**Water Cooled Press Settings**

Pressure (psi)	Temperature		Press Time	Foil Position	Foil	Release Top/Bot.
	Top	Bottom				
25	165°C 329°F	165°C 329°F	45 s	Top	Blue PU	Matte/ Rough Teflon

\*These settings are a guideline only, every press is different. Test splicing is recommended.

**Standard Splices**

Endless	Single Finger
Clipper Lace	UCM36SL SP
Staple Lace	RS62

