

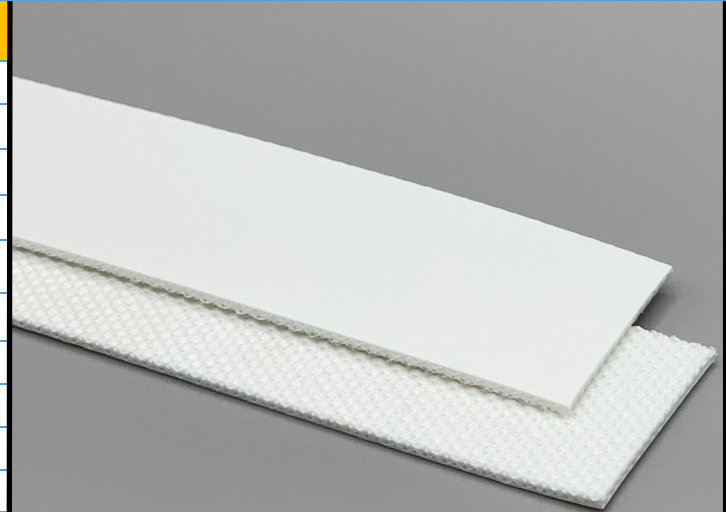
130210

U92/2ENF M White

PU

Material Construction

| | | | |
|----------------|-----------|-------------------------|---------------------------|
| Surface | Conveying | Material | PU |
| | | Profile | Matt |
| | | Color | White |
| | | Coefficient of friction | N/A |
| Tension Member | | Material | Non-Fray Polyester Fabric |
| | | Plies | 2 |
| Underside | | Material | Non-Fray Polyester Fabric |
| | | Profile | PU Impregnated |
| | | Color | White |
| | | Coefficient of friction | 0.25 |



Technical Specifications

| | | |
|---|------------------------|---------------------------|
| Overall Thickness | 1.30 mm | 0.051 in. |
| Weight | 1.40 kg/m ² | 0.29 lbs./ft ² |
| Maximum Width | 3,200 mm | 126.00 in. |
| Minimum Pulley/Nose Bar | | |
| Diameter for Recommended Endless Splice | 12.00 mm | 0.472 in. |
| Minimum Back Flex | 35.00 mm | 1.378 in. |
| Load for 1% Extension (Dynamic) | 6 N/mm | 34.26 lbs./in. |
| Standard Tension | | 0.5 % |
| Product Operational Temperature Range | -20/100 °C | -4/212 °F |
| Cover Durometer | 92 Shore A | |

Features

| | | | |
|-----------------------|-----|-----------------|-----|
| FDA | YES | Anti-Static | NO |
| USDA Meat and Poultry | NO | Flame Retardant | NO |
| USDA Dairy | NO | Cross Rigid | YES |
| Anti-Microbial | NO | | |

Standard Fabrications

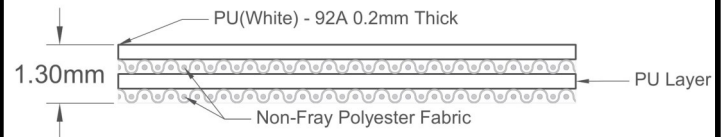
| | | | |
|------------------------|-----|-------------------------|-----|
| Longitudinal Splice | NO | Cleats | YES |
| Guide Applied to Cover | YES | Guide Applied to Bottom | YES |
| Footed Sidewall | YES | Footless Sidewall | NO |
| Edge Capped | YES | Plastic Spiral Lace | YES |

Notes

2 Ply Non-Fray monofilament — cover one side

*Minimum pulley diameters can vary when mechanical lace is installed. Contact our technical team for any fabrication or application questions.

Material Build



Splicing Instructions

High Speed Press Settings

| Pressure (psi) | Temperature | | Press Time | Foil Position | Foil | Release Top/Bot. |
|----------------|----------------|----------------|------------|---------------|----------|------------------------|
| | Top | Bottom | | | | |
| 25 | 165°C 329°F | 165°C 329°F | 90 s | Top | White PU | Matte/ Rough Teflon |

Water Cooled Press Settings

| Pressure (psi) | Temperature | | Press Time | Foil Position | Foil | Release Top/Bot. |
|----------------|----------------|----------------|------------|---------------|----------|------------------------|
| | Top | Bottom | | | | |
| 25 | 165°C 329°F | 165°C 329°F | 45 s | Top | White PU | Matte/ Rough Teflon |

*These settings are a guideline only, every press is different. Test splicing is recommended.

Standard Splices

| | |
|--------------|---------------|
| Endless | Single Finger |
| Clipper Lace | UCM36 XSP |
| Staple Lace | N/A |

