

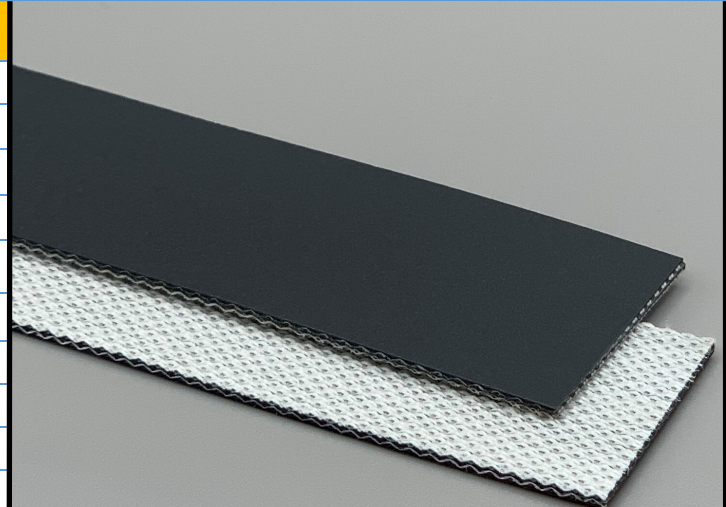
**130230**

**U92/2ENF-AS M Gray**

**PU**

**Material Construction**

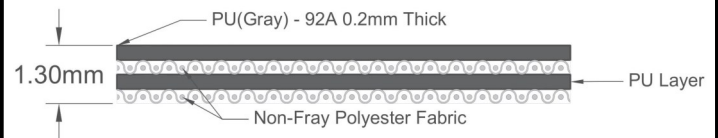
Surface	Conveying	Material	PU
		Profile	Matt
		Color	Gray
		Coefficient of friction	N/A
Tension Member		Material	Non-Fray Polyester Fabric
		Plies	2
Underside		Material	Non-Fray Polyester Fabric
		Profile	PU Impregnated
		Color	White
		Coefficient of friction	0.25



**Technical Specifications**

Overall Thickness	1.30 mm	0.051 in.
Weight	1.40 kg/m <sup>2</sup>	0.29 lbs./ft <sup>2</sup>
Maximum Width	3,200 mm	126.00 in.
Minimum Pulley/Nose Bar		
Diameter for Recommended Endless Splice	12.00 mm	0.472 in.
Minimum Back Flex	35.00 mm	1.378 in.
Load for 1% Extension (Dynamic)	6 N/mm	34.26 lbs./in.
Standard Tension		0.5 %
Product Operational Temperature Range	-20/100 °C	-4/212 °F
Cover Durometer	92 Shore A	

**Material Build**



**Features**

FDA	YES	Anti-Static	YES
USDA Meat and Poultry	NO	Flame Retardant	NO
USDA Dairy	NO	Cross Rigid	YES
Anti-Microbial	NO		

**Standard Fabrications**

Longitudinal Splice	NO	Cleats	YES
Guide Applied to Cover	YES	Guide Applied to Bottom	YES
Footed Sidewall	YES	Footless Sidewall	NO
Edge Capped	YES	Plastic Spiral Lace	YES

**Notes**

2 Ply Non-Fray monofilament — cover one side

**Splicing Instructions**

**High Speed Press Settings**

Pressure (psi)	Temperature		Press Time	Foil Position	Foil	Release Top/Bot.
	Top	Bottom				
25	165°C 329°F	165°C 329°F	90 s	Top	Gray PU	Matte/ Rough Teflon

**Water Cooled Press Settings**

Pressure (psi)	Temperature		Press Time	Foil Position	Foil	Release Top/Bot.
	Top	Bottom				
25	165°C 329°F	165°C 329°F	45 s	Top	Gray PU	Matte/ Rough Teflon

\*These settings are a guideline only, every press is different. Test splicing is recommended.

**Standard Splices**

Endless	Single Finger
Clipper Lace	UCM36 XSP
Staple Lace	N/A

\*Minimum pulley diameters can vary when mechanical lace is installed. Contact our technical team for any fabrication or application questions.

