

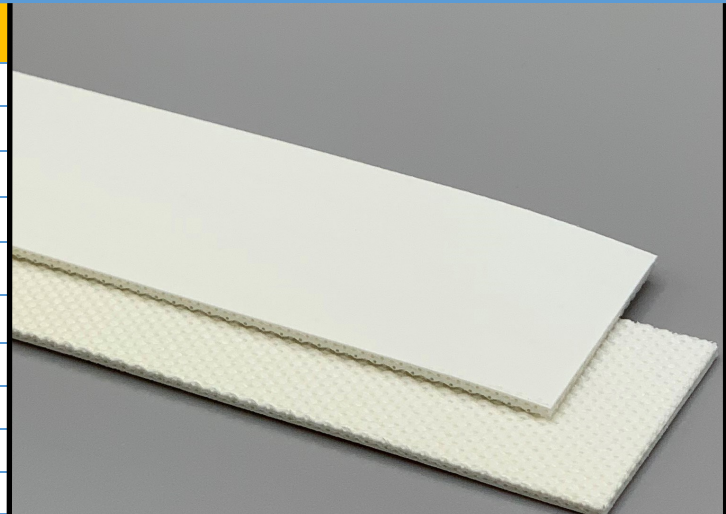
130235

U92/2ENF-AS M White

PU

Material Construction

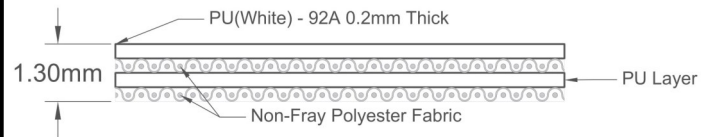
Surface	Conveying	Material	PU
		Profile	Matt
		Color	White
		Coefficient of friction	N/A
Tension Member		Material	Non-Fray Polyester Fabric
		Plies	2
Underside		Material	Non-Fray Polyester Fabric
		Profile	PU Impregnated
		Color	White
		Coefficient of friction	0.25



Technical Specifications

Overall Thickness	1.30 mm	0.051 in.
Weight	1.40 kg/m ²	0.29 lbs./ft ²
Maximum Width	3,200 mm	126.00 in.
Minimum Pulley/Nose Bar		
Diameter for Recommended Endless Splice	12.00 mm	0.472 in.
Minimum Back Flex	35.00 mm	1.378 in.
Load for 1% Extension (Dynamic)	6 N/mm	34.26 lbs./in.
Standard Tension		0.5 %
Product Operational Temperature Range	-20/100 °C	-4/212 °F
Cover Durometer	92 Shore A	

Material Build



Features

FDA	YES	Anti-Static	YES
USDA Meat and Poultry	NO	Flame Retardant	NO
USDA Dairy	NO	Cross Rigid	YES
Anti-Microbial	NO		

Standard Fabrications

Longitudinal Splice	NO	Cleats	YES
Guide Applied to Cover	YES	Guide Applied to Bottom	YES
Footed Sidewall	YES	Footless Sidewall	NO
Edge Capped	YES	Plastic Spiral Lace	YES

Notes

2 Ply Non-Fray monofilament — cover one side. All purpose material for conveying biscuits, bread, dough, and sweets. The low friction surface is great for transfer movements and accumulation.

*Minimum pulley diameters can vary when mechanical lace is installed. Contact our technical team for any fabrication or application questions.

Splicing Instructions

High Speed Press Settings

Pressure (psi)	Temperature		Press Time	Foil Position	Foil	Release Top/Bot.
	Top	Bottom				
25	165°C 329°F	165°C 329°F	90 s	Top	White PU	Matte/ Rough Teflon

Water Cooled Press Settings

Pressure (psi)	Temperature		Press Time	Foil Position	Foil	Release Top/Bot.
	Top	Bottom				
25	165°C 329°F	165°C 329°F	45 s	Top	White PU	Matte/ Rough Teflon

*These settings are a guideline only, every press is different. Test splicing is recommended.

Standard Splices

Endless	Single Finger
Clipper Lace	UCM36 XSP
Staple Lace	N/A

