

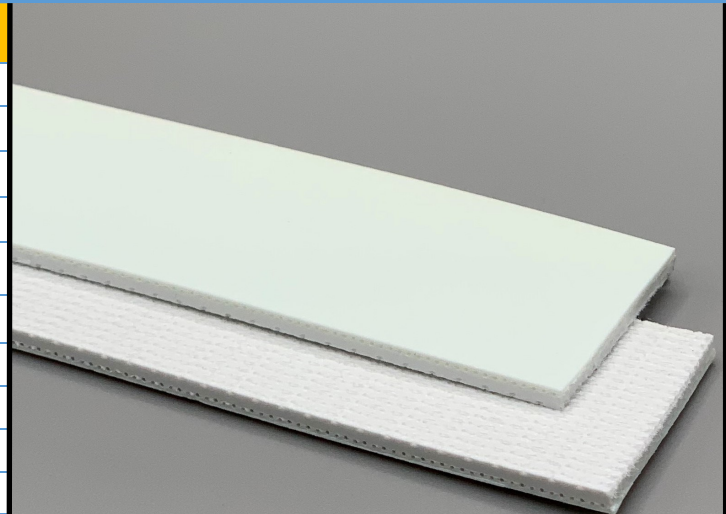
**130265**

**U85/2KENF G White**

**PU**

**Material Construction**

Surface	Conveying	Material	PU
		Profile	Glossy
		Color	White
		Coefficient of friction	N/A
Tension Member	Material	Non-Fray Polyester Fabric	
	Plies	2	
Underside	Material	Non-Fray Polyester Knit Fabric	
	Profile	PU Impregnated	
	Color	White	
	Coefficient of friction	0.25	



**Technical Specifications**

Overall Thickness	2.20 mm	0.087 in.
Weight	2.50 kg/m <sup>2</sup>	0.51 lbs./ft <sup>2</sup>
Maximum Width	3,200 mm	126.00 in.
Minimum Pulley/Nose Bar		
Diameter for Recommended Endless Splice	10.00 mm	0.394 in.
Minimum Back Flex	15.00 mm	0.591 in.
Load for 1% Extension (Dynamic)	4 N/mm	22.84 lbs./in.
Standard Tension		0.5 %
Product Operational Temperature Range	-30/100 °C	-22/212 °F
Cover Durometer	85 Shore A	

**Features**

FDA	YES	Anti-Static	NO
USDA Meat and Poultry	NO	Flame Retardant	NO
USDA Dairy	NO	Cross Rigid	YES
Anti-Microbial	NO		

**Standard Fabrications**

Longitudinal Splice	NO	Cleats	YES
Guide Applied to Cover	YES	Guide Applied to Bottom	YES
Footed Sidewall	YES	Footless Sidewall	NO
Edge Capped	NO	Plastic Spiral Lace	YES

**Notes**

2 Ply Non-Fray monofilament — cover one side

\*Minimum pulley diameters can vary when mechanical lace is installed. Contact our technical team for any fabrication or application questions.

**Material Build**



**Splicing Instructions**

**High Speed Press Settings**

Pressure (psi)	Temperature		Press Time	Foil Position	Foil	Release Top/Bot.
	Top	Bottom				
25	165°C 329°F	165°C 329°F	120 s	Top	White PU	Gloss/Rough Teflon

**Water Cooled Press Settings**

Pressure (psi)	Temperature		Press Time	Foil Position	Foil	Release Top/Bot.
	Top	Bottom				
25	165°C 329°F	165°C 329°F	60 s	Top	White PU	Gloss/Rough Teflon

\*These settings are a guideline only, every press is different. Test splicing is recommended.

**Standard Splices**

Endless	Single Finger
Clipper Lace	UCM36 SP
Staple Lace	RS62

