

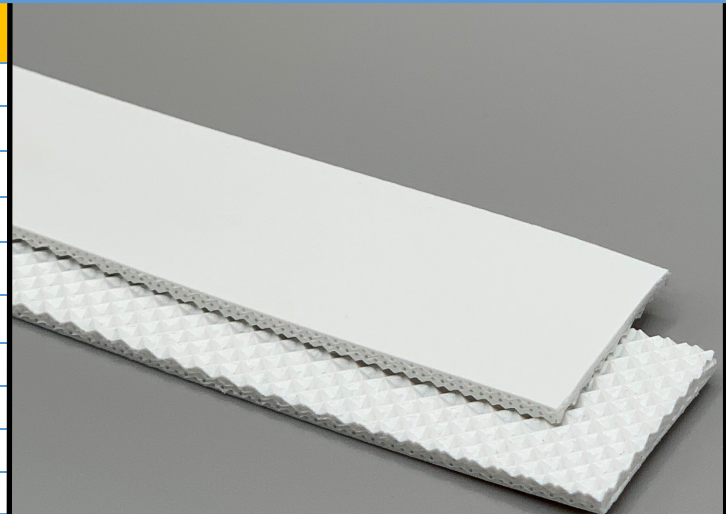
**130605**

**AM-UU85/2ENF NPY M White**

**PU**

**Material Construction**

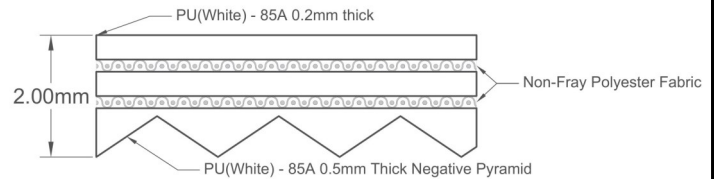
Surface	Conveying	Material	PU
		Profile	Matt
		Color	White
		Coefficient of friction	N/A
Tension Member		Material	Non-Fray Polyester Fabric
		Plies	2
Underside		Material	PU
		Profile	Negative Pyramid
		Color	White
		Coefficient of friction	0.40



**Technical Specifications**

Overall Thickness	2.00 mm	0.079 in.
Weight	2.10 kg/m <sup>2</sup>	0.43 lbs./ft <sup>2</sup>
Maximum Width	3,200 mm	126.00 in.
Minimum Pulley/Nose Bar		
Diameter for Recommended Endless Splice	30.00 mm	1.181 in.
Minimum Back Flex	40.00 mm	1.575 in.
Load for 1% Extension (Dynamic)	6 N/mm	34.26 lbs./in.
Standard Tension		0.5 %
Product Operational Temperature Range	-20/100 °C	-4/212 °F
Cover Durometer	85 Shore A	

**Material Build**



**Features**

FDA	YES	Anti-Static	NO
USDA Meat and Poultry	YES	Flame Retardant	NO
USDA Dairy	NO	Cross Rigid	YES
Anti-Microbial	YES		

**Standard Fabrications**

Longitudinal Splice	NO	Cleats	YES
Guide Applied to Cover	YES	Guide Applied to Bottom	YES
Footed Sidewall	YES	Footless Sidewall	NO
Edge Capped	YES	Plastic Spiral Lace	YES

**Notes**

2 Ply non-fray monofilament — cover both sides

\*Minimum pulley diameters can vary when mechanical lace is installed. Contact our technical team for any fabrication or application questions.

**Splicing Instructions**

**High Speed Press Settings**

Pressure (psi)	Temperature		Press Time	Foil Position	Foil	Release Top/Bot.
	Top	Bottom				
25	165°C 329°F	165°C 329°F	90 s	Top	White PU	Matte/ Impression Pad

**Water Cooled Press Settings**

Pressure (psi)	Temperature		Press Time	Foil Position	Foil	Release Top/Bot.
	Top	Bottom				
25	165°C 329°F	165°C 329°F	30 s	Top	White PU	Matte/ Impression Pad

\*These settings are a guideline only, every press is different. Test splicing is recommended.

**Standard Splices**

Endless	Single Finger
Clipper Lace	UCM36 SP
Staple Lace	RS62

