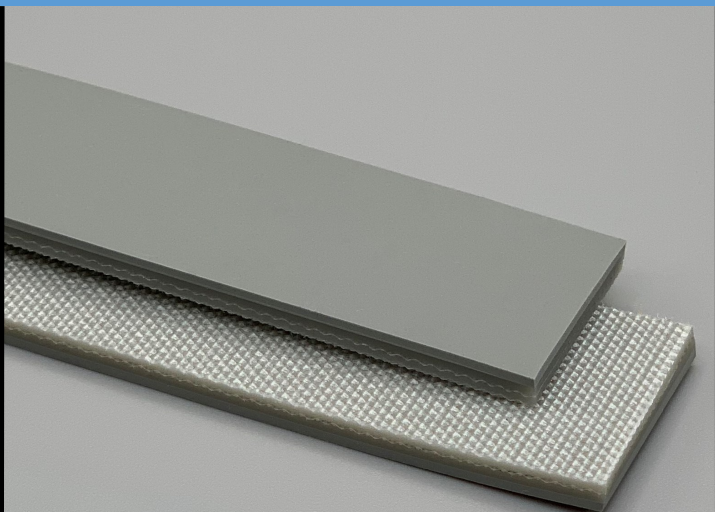


266223
2P70/20/0 AS G Gray
PVC

Material Construction

Conveying Surface	Material	PVC
	Profile	Glossy
	Color	Gray
	Coefficient of friction	N/A
Tension Member	Material	Polyester Fabric
	Plies	2
Underside	Material	Polyester fabric
	Profile	Impregnated
	Color	Gray
	Coefficient of friction	0.25



Technical Specifications

Overall Thickness	3.40 mm	0.134 in.
Weight	4.1 kg/m ²	0.84 lbs./ft ²
Maximum Width	2,000 mm	78.75 in.
Minimum Pulley/Nose Bar		
Diameter for Recommended Endless Splice	60 mm	2.362 in.
Minimum Back Flex	80 mm	3.15 in.
Load for 1% Extension (Dynamic)	7 N/mm	39.97 lbs./in.
Standard Tension		0.5 %
Product Operational Temperature Range	-10/70 °C	14/158 °F
Cover Durometer		35 Shore A

Features

FDA	NO	Anti-Static	YES
USDA Meat and Poultry	NO	Flame Retardant	NO
USDA Dairy	NO	Cross Rigid	YES
Anti-Microbial	NO		

Standard Fabrications

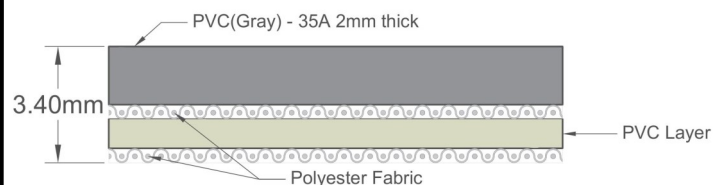
Longitudinal Splice	YES	Cleats	YES
Guide Applied to Cover	NO	Guide Applied to Bottom	YES
Footed Sidewall	NO	Footless Sidewall	NO
Edge Capped	NO	Plastic Spiral Lace	YES

Notes

2 Ply Monofilament - cover one side

*Minimum pulley diameters can vary when mechanical lace is installed. Contact our technical team for any fabrication or application questions.

Material Build



Splicing Instructions

High Speed Press Settings

Pressure (psi)	Temperature		Press Time	Foil Position	Foil	Release Top/Bot.
	Top	Bottom				
30	170°C 338°F	170°C 338°F	240 s	Top	Grey PVC	Gloss/Rough Teflon

Water Cooled Press Settings

Pressure (psi)	Temperature		Press Time	Foil Position	Foil	Release Top/Bot.
	Top	Bottom				
30	160°C 320°F	170°C 338°F	120 s	Top	Grey PVC	Gloss/Rough Teflon

*These settings are a guideline only, every press is different. Test splicing is recommended.

Standard Splices

Endless	Single Finger
Clipper Lace	UX-1
Staple Lace	RS125