

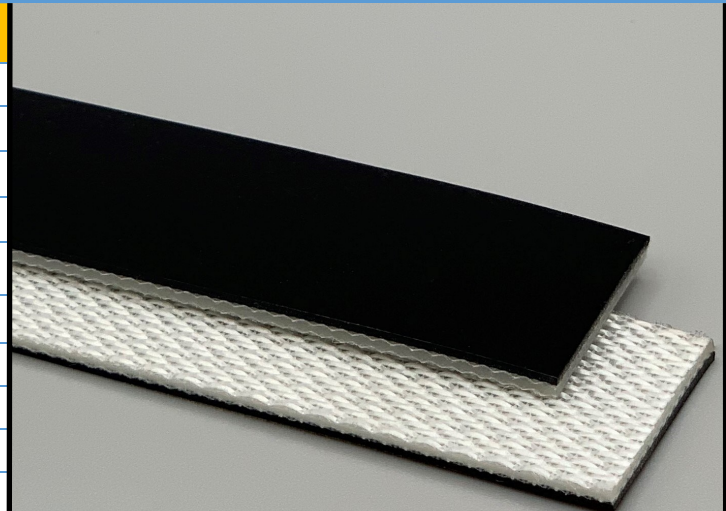
266226

2P70/05/0 AS G Black

PVC

Material Construction

Surface	Conveying	Material	PVC
		Profile	Glossy
		Color	Black
		Coefficient of friction	N/A
Tension Member		Material	Polyester Fabric
		Plies	2
Underside		Material	Whisper weave polyester
		Profile	Impregnated / Low Noise
		Color	White
		Coefficient of friction	0.20



Technical Specifications

Overall Thickness	2.10 mm	0.083 in.
Weight	2.5 kg/m ²	0.51 lbs./ft ²
Maximum Width	2,000 mm	78.75 in.
Minimum Pulley/Nose Bar		
Diameter for Recommended Endless Splice	30 mm	1.181 in.
Minimum Back Flex	40 mm	1.575 in.
Load for 1% Extension (Dynamic)	7 N/mm	39.97 lbs./in.
Standard Tension		0.5 %
Product Operational Temperature Range	-10/70 °C	14/158 °F
Cover Durometer	75 Shore A	

Features

FDA	NO	Anti-Static	YES
USDA Meat and Poultry	NO	Flame Retardant	NO
USDA Dairy	NO	Cross Rigid	YES
Anti-Microbial	NO		

Standard Fabrications

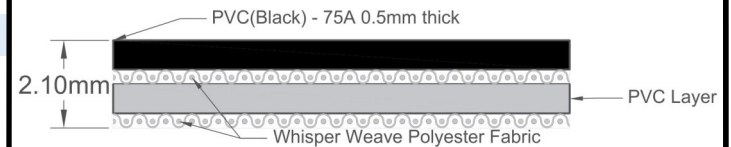
Longitudinal Splice	YES	Cleats	YES
Guide Applied to Cover	YES	Guide Applied to Bottom	YES
Footed Sidewall	YES	Footless Sidewall	NO
Edge Capped	YES	Plastic Spiral Lace	YES

Notes

2 Ply Monofilament - cover one side

*Minimum pulley diameters can vary when mechanical lace is installed. Contact our technical team for any fabrication or application questions.

Material Build



Splicing Instructions

High Speed Press Settings

Pressure (psi)	Temperature		Press Time	Foil Position	Foil	Release Top/Bot.
	Top	Bottom				
30	175°C 347°F	175°C 347°F	240 s	Top	Black PVC	Gloss/Rough Teflon

Water Cooled Press Settings

Pressure (psi)	Temperature		Press Time	Foil Position	Foil	Release Top/Bot.
	Top	Bottom				
30	175°C 347°F	175°C 347°F	120 s	Top	Black PVC	Gloss/Rough Teflon

*These settings are a guideline only, every press is different. Test splicing is recommended.

Standard Splices

Endless	Single Finger
Clipper Lace	UCM36 SP
Staple Lace	RS62

