

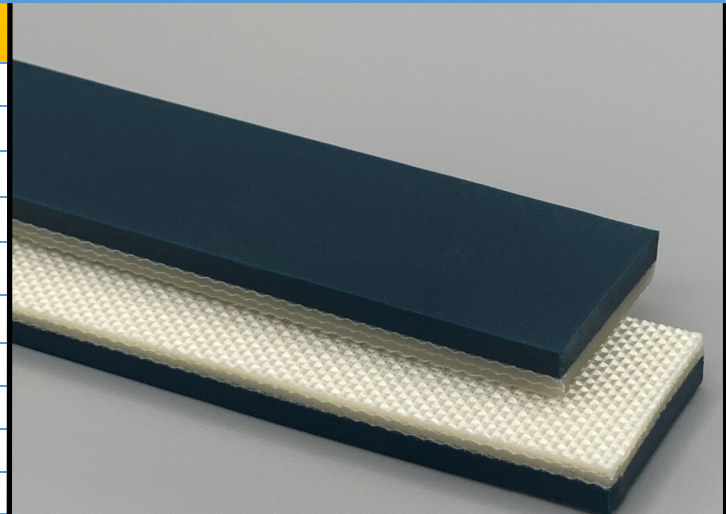
266301

3P180/30/0 AS M Green

PVC

Material Construction

Surface	Conveying	Material	PVC
		Profile	Matt
		Color	Dark Green
		Coefficient of friction	N/A
Tension Member		Material	Polyester Fabric
		Plies	3
Underside		Material	Polyester fabric
		Profile	Impregnated
		Color	White
		Coefficient of friction	0.25



Technical Specifications

Overall Thickness	6.00 mm	0.236 in.
Weight	7 kg/m ²	1.43 lbs./ft ²
Maximum Width	2,000 mm	78.75 in.
Minimum Pulley/Nose Bar		
Diameter for Recommended Endless Splice	150 mm	5.906 in.
Minimum Back Flex	200 mm	7.874 in.
Load for 1% Extension (Dynamic)	18 N/mm	102.78 lbs./in.
Standard Tension		0.5 %
Product Operational Temperature Range	-10/70 °C	14/158 °F
Cover Durometer	35 Shore A	

Features

FDA	NO	Anti-Static	YES
USDA Meat and Poultry	NO	Flame Retardant	NO
USDA Dairy	NO	Cross Rigid	YES
Anti-Microbial	NO		

Standard Fabrications

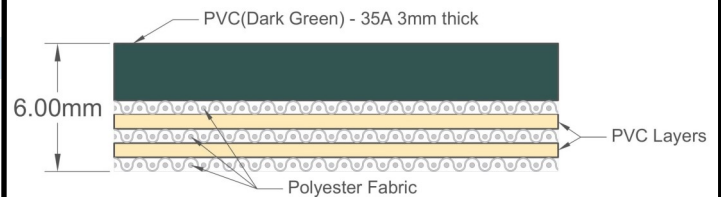
Longitudinal Splice	YES	Cleats	NO
Guide Applied to Cover	NO	Guide Applied to Bottom	YES
Footed Sidewall	NO	Footless Sidewall	NO
Edge Capped	NO	Plastic Spiral Lace	YES

Notes

3 Ply Monofilament - cover one side

*Minimum pulley diameters can vary when mechanical lace is installed. Contact our technical team for any fabrication or application questions.

Material Build



Splicing Instructions

High Speed Press Settings

Pressure (psi)	Temperature		Press Time	Foil Position	Foil	Release Top/Bot.
	Top	Bottom				
N/A	N/A°C N/A°F	N/A°C N/A°F	N/A s	N/A	N/A	N/A/N/A

Water Cooled Press Settings

Pressure (psi)	Temperature		Press Time	Foil Position	Foil	Release Top/Bot.
	Top	Bottom				
30	175°C 347°F	175°C 347°F	180 s	Top	Green PVC	Matte/ Rough Teflon

*These settings are a guideline only, every press is different. Test splicing is recommended.

Standard Splices

Endless	Finger Over Finger
Clipper Lace	U4
Staple Lace	RS125 Recessed

