

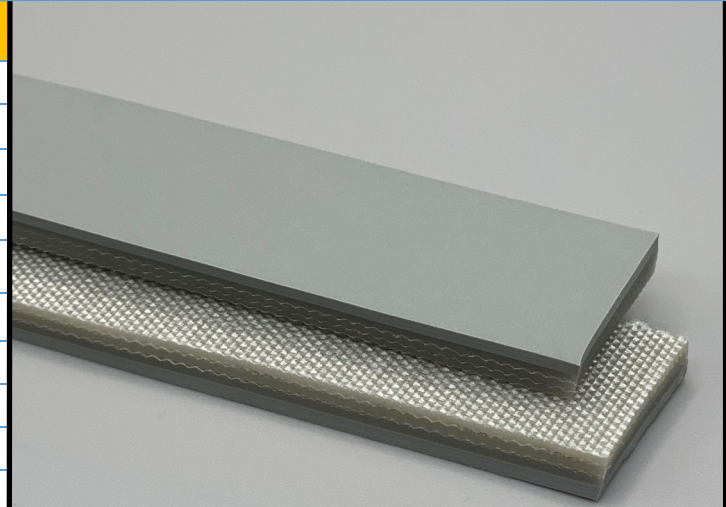
266310

3P150/20/0 AS M Gray

PVC

Material Construction

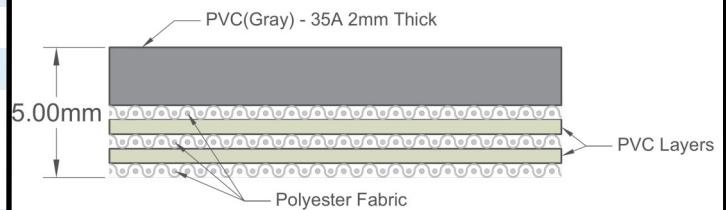
| | | | |
|----------------|-----------|-------------------------|------------------|
| Surface | Conveying | Material | PVC |
| | | Profile | Matt |
| | | Color | Gray |
| | | Coefficient of friction | N/A |
| Tension Member | | Material | Polyester Fabric |
| | | Plies | 3 |
| Underside | | Material | Polyester fabric |
| | | Profile | Impregnated |
| | | Color | Gray |
| | | Coefficient of friction | 0.25 |



Technical Specifications

| | | |
|---|---------------------|---------------------------|
| Overall Thickness | 5.00 mm | 0.197 in. |
| Weight | 6 kg/m ² | 1.23 lbs./ft ² |
| Maximum Width | 2,000 mm | 78.75 in. |
| Minimum Pulley/Nose Bar | | |
| Diameter for Recommended Endless Splice | 120 mm | 4.724 in. |
| Minimum Back Flex | 150 mm | 5.906 in. |
| Load for 1% Extension (Dynamic) | 15 N/mm | 85.65 lbs./in. |
| Standard Tension | | 0.5 % |
| Product Operational Temperature Range | -10/70 °C | 14/158 °F |
| Cover Durometer | 35 Shore A | |

Material Build



Features

| | | | |
|-----------------------|----|-----------------|-----|
| FDA | NO | Anti-Static | YES |
| USDA Meat and Poultry | NO | Flame Retardant | NO |
| USDA Dairy | NO | Cross Rigid | YES |
| Anti-Microbial | NO | | |

Standard Fabrications

| | | | |
|------------------------|-----|-------------------------|-----|
| Longitudinal Splice | YES | Cleats | YES |
| Guide Applied to Cover | NO | Guide Applied to Bottom | YES |
| Footed Sidewall | NO | Footless Sidewall | NO |
| Edge Capped | NO | Plastic Spiral Lace | YES |

Notes

3 Ply Monofilament - cover one side

*Minimum pulley diameters can vary when mechanical lace is installed. Contact our technical team for any fabrication or application questions.

Splicing Instructions

High Speed Press Settings

| Pressure (psi) | Temperature | | Press Time | Foil Position | Foil | Release Top/Bot. |
|----------------|----------------|----------------|------------|---------------|------|------------------|
| | Top | Bottom | | | | |
| N/A | N/A°C N/A°F | N/A°C N/A°F | N/A s | N/A | N/A | N/A/N/A |

Water Cooled Press Settings

| Pressure (psi) | Temperature | | Press Time | Foil Position | Foil | Release Top/Bot. |
|----------------|----------------|----------------|------------|---------------|----------|------------------------|
| | Top | Bottom | | | | |
| 30 | 175°C 347°F | 175°C 347°F | 180 s | Top | Gray PVC | Matte/ Rough Teflon |

*These settings are a guideline only, every press is different. Test splicing is recommended.

Standard Splices

| | |
|--------------|--------------------|
| Endless | Finger Over Finger |
| Clipper Lace | U3 |
| Staple Lace | RS125 Recessed |

