

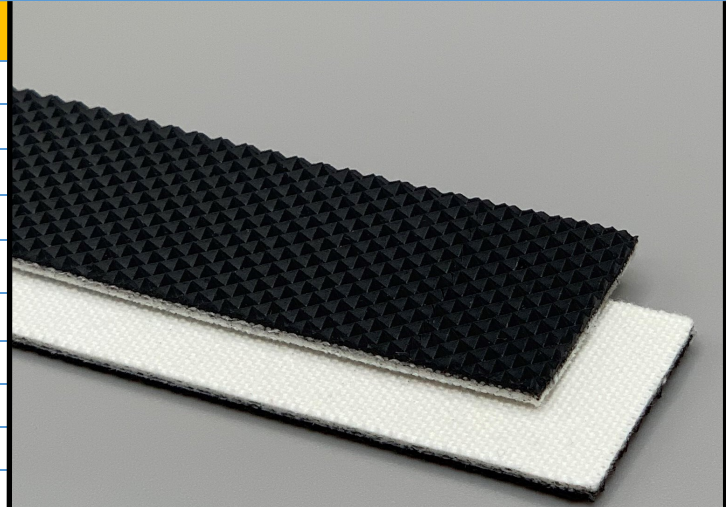
267102

2PN40/NPY/0 AS Black

PVC

Material Construction

| | | | |
|----------------|-----------|-------------------------|-------------------------|
| Surface | Conveying | Material | PVC |
| | | Profile | Negative Pyramid |
| | | Color | Black |
| | | Coefficient of friction | N/A |
| Tension Member | | Material | Polyester Fabric |
| | | Plies | 2 |
| Underside | | Material | Polyester Staple Fabric |
| | | Profile | Low Noise |
| | | Color | White |
| | | Coefficient of friction | 0.25 |



Technical Specifications

| | | |
|-----------------------------------------|---------------------|---------------------------|
| Overall Thickness | 2.10 mm | 0.083 in. |
| Weight | 2 kg/m ² | 0.41 lbs./ft ² |
| Maximum Width | 3,073 mm | 121 in. |
| Minimum Pulley/Nose Bar | | |
| Diameter for Recommended Endless Splice | 30 mm | 1.181 in. |
| Minimum Back Flex | 40 mm | 1.575 in. |
| Load for 1% Extension (Dynamic) | 4 N/mm | 22.84 lbs./in. |
| Standard Tension | | 0.5 % |
| Product Operational Temperature Range | -10/70 °C | 14/158 °F |
| Cover Durometer | 45 Shore A | |

Features

| | | | |
|-----------------------|----|-----------------|-----|
| FDA | NO | Anti-Static | YES |
| USDA Meat and Poultry | NO | Flame Retardant | NO |
| USDA Dairy | NO | Cross Rigid | NO |
| Anti-Microbial | NO | | |

Standard Fabrications

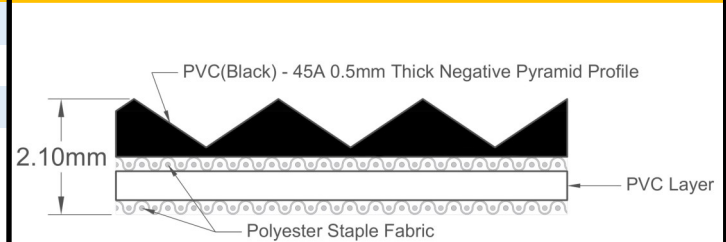
| | | | |
|------------------------|-----|-------------------------|-----|
| Longitudinal Splice | YES | Cleats | YES |
| Guide Applied to Cover | NO | Guide Applied to Bottom | YES |
| Footed Sidewall | NO | Footless Sidewall | NO |
| Edge Capped | YES | Plastic Spiral Lace | YES |

Notes

Quiet running and extremely flexible, this product is highly suited for 45 degree logistics transfers, carrier cells, packaging applications, troughing requirements, inclines and a variety of general transport needs where positive top side grip is needed.

*Minimum pulley diameters can vary when mechanical lace is installed. Contact our technical team for any fabrication or application questions.

Material Build



Splicing Instructions

High Speed Press Settings

| Pressure (psi) | Temperature | | Press Time | Foil Position | Foil | Release Top/Bot. |
|----------------|----------------|----------------|------------|---------------|-----------|-----------------------------|
| | Top | Bottom | | | | |
| 30 | 175°C 347°F | 175°C 347°F | 240 s | Top | Black PVC | Impression Pad/Rough Teflon |

Water Cooled Press Settings

| Pressure (psi) | Temperature | | Press Time | Foil Position | Foil | Release Top/Bot. |
|----------------|----------------|----------------|------------|---------------|-----------|-----------------------------|
| | Top | Bottom | | | | |
| 30 | 175°C 347°F | 170°C 338°F | 210 s | Top | Black PVC | Impression Pad/Rough Teflon |

*These settings are a guideline only, every press is different. Test splicing is recommended.

Standard Splices

| | |
|--------------|---------------|
| Endless | Single Finger |
| Clipper Lace | UCM36 SP |
| Staple Lace | RS62 |

