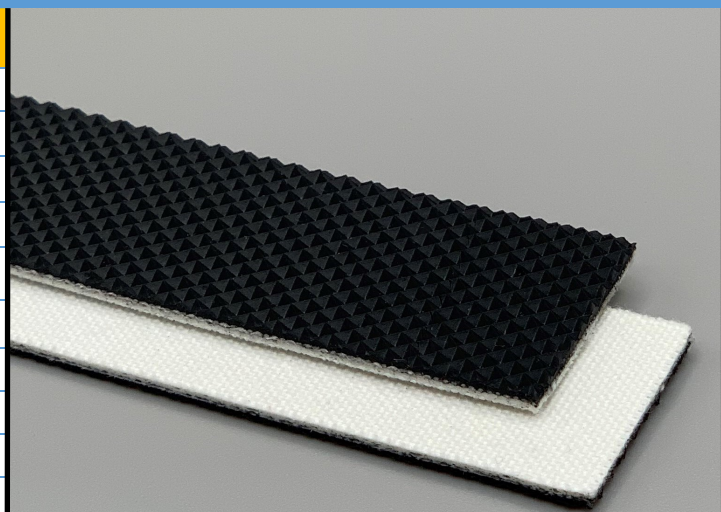


267271
2PN40/NPY/0 AS FR Black
PVC

Material Construction

Conveying Surface	Material	PVC
	Profile	Negative Pyramid
	Color	Black
	Coefficient of friction	N/A
Tension Member	Material	Polyester Fabric
	Plies	2
Underside	Material	Polyester Staple Fabric
	Profile	Low Noise
	Color	White
	Coefficient of friction	0.25



Technical Specifications

Overall Thickness	2.10 mm	0.083 in.
Weight	2.1 kg/m ²	0.43 lbs./ft ²
Maximum Width	1,650 mm	64.961 in.
Minimum Pulley/Nose Bar		
Diameter for Recommended Endless Splice	30 mm	1.181 in.
Minimum Back Flex	40 mm	1.575 in.
Load for 1% Extension (Dynamic)	4 N/mm	22.84 lbs./in.
Standard Tension		0.5 %
Product Operational Temperature Range	-10/70 °C	14/158 °F
Cover Durometer	40 Shore A	

Features

FDA	NO	Anti-Static	YES
USDA Meat and Poultry	NO	Flame Retardant	YES
USDA Dairy	NO	Cross Rigid	NO
Anti-Microbial	NO		

Standard Fabrications

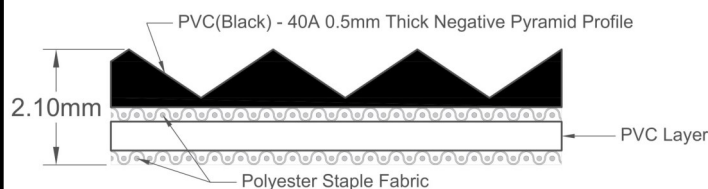
Longitudinal Splice	YES	Cleats	YES
Guide Applied to Cover	YES	Guide Applied to Bottom	YES
Footed Sidewall	NO	Footless Sidewall	NO
Edge Capped	YES	Plastic Spiral Lace	YES

Notes

Flame retardant construction with quiet running bottom fabric is extremely flexible and highly suited for 45 degree logistics transfers, carrier cells, packaging applications, troughing requirements, inclines and a variety of general transport needs where

*Minimum pulley diameters can vary when mechanical lace is installed. Contact our technical team for any fabrication or application questions.

Material Build



Splicing Instructions

High Speed Press Settings

Pressure (psi)	Temperature		Press Time	Foil Position	Foil	Release Top/Bot.
	Top	Bottom				
30	175°C 347°F	175°C 347°F	240 s	Top	Black PVC	Impression Pad/Rough Teflon

Water Cooled Press Settings

Pressure (psi)	Temperature		Press Time	Foil Position	Foil	Release Top/Bot.
	Top	Bottom				
30	175°C 347°F	170°C 338°F	210 s	Top	Black PVC	Impression Pad/Rough Teflon

*These settings are a guideline only, every press is different. Test splicing is recommended.

Standard Splices

Endless	Single Finger
Clipper Lace	UCM36 SP
Staple Lace	RS62