

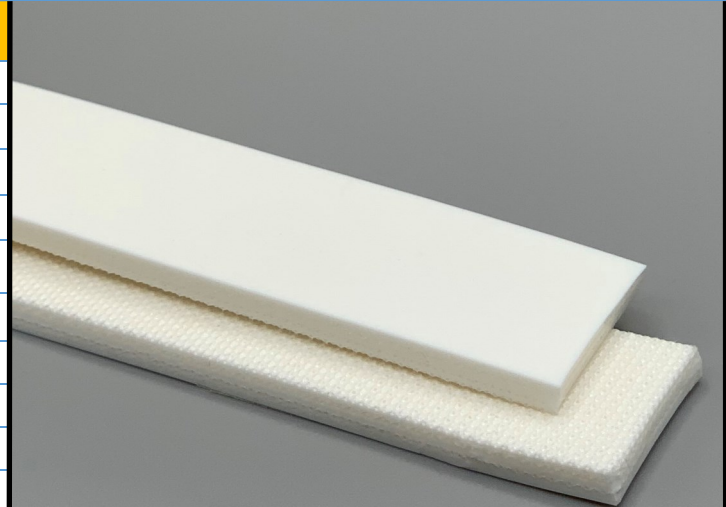
268315

3P120/10/0 G White

PVC

Material Construction

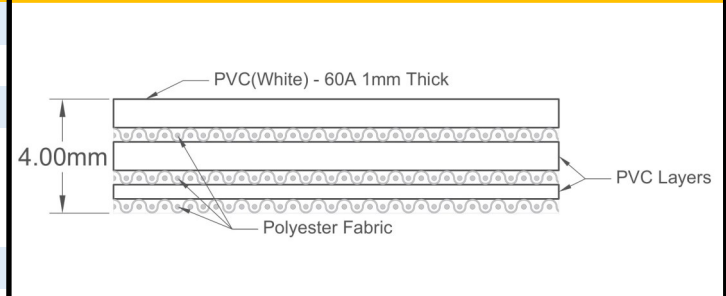
Surface	Conveying	Material	PVC
		Profile	Glossy
		Color	White
		Coefficient of friction	N/A
Tension Member		Material	Polyester Fabric
		Plies	3
Underside		Material	Polyester Fabric
		Profile	Impregnated
		Color	White
		Coefficient of friction	0.25



Technical Specifications

Overall Thickness	4.00 mm	0.157 in.
Weight	4.3 kg/m ²	0.88 lbs./ft ²
Maximum Width	3,000 mm	118.125 in.
Minimum Pulley/Nose Bar		
Diameter for Recommended Endless Splice	60 mm	2.362 in.
Minimum Back Flex	100 mm	3.937 in.
Load for 1% Extension (Dynamic)	12 N/mm	68.52 lbs./in.
Standard Tension		0.5 %
Product Operational Temperature Range	-10/80 °C	14/176 °F
Cover Durometer	60 Shore A	

Material Build



Features

FDA	YES	Anti-Static	NO
USDA Meat and Poultry	NO	Flame Retardant	NO
USDA Dairy	NO	Cross Rigid	YES
Anti-Microbial	NO		

Standard Fabrications

Longitudinal Splice	YES	Cleats	YES
Guide Applied to Cover	YES	Guide Applied to Bottom	YES
Footed Sidewall	YES	Footless Sidewall	NO
Edge Capped	YES	Plastic Spiral Lace	YES

Notes

3 Ply Monofilament - cover one side. Excellent oil and grease resistance

*Minimum pulley diameters can vary when mechanical lace is installed. Contact our technical team for any fabrication or application questions.

Splicing Instructions

High Speed Press Settings

Pressure (psi)	Temperature		Press Time	Foil Position	Foil	Release Top/Bot.
	Top	Bottom				
N/A	N/A°C N/A°F	N/A°C N/A°F	N/A s	N/A	N/A	N/A/N/A

Water Cooled Press Settings

Pressure (psi)	Temperature		Press Time	Foil Position	Foil	Release Top/Bot.
	Top	Bottom				
30	175°C 347°F	170°C 338°F	240 s	Top	White PVC	Gloss/Rough Teflon

*These settings are a guideline only, every press is different. Test splicing is recommended.

Standard Splices

Endless	Finger Over Finger
Clipper Lace	U2
Staple Lace	RS125

