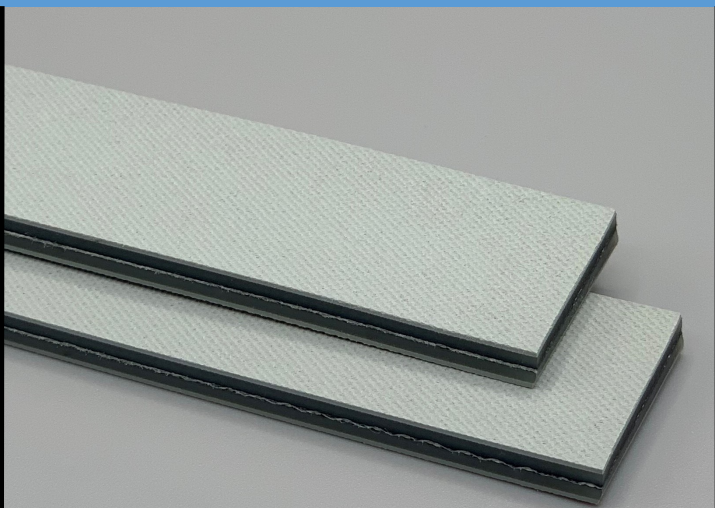


351005
BF 40E Gray
PT

Material Construction

Conveying Surface	Material	G Elastomer
	Profile	Normal Texture
	Color	Gray
Tension Member	Material	Polyester Fabric
	Plies	1
Underside	Material	G Elastomer
	Profile	Normal Texture
	Color	Gray



Technical Specifications

Overall thickness	4.00 mm	0.157 in.
Weight	4.30 kg/m ²	0.88 lbf/ft ²
Maximum width	500 mm	19.625 in.
Minimum pulley/Back flex	40 mm	1.58 in.
Diameter for recommended endless splice		
Shaft Load FW at 1% Elongation & 180° Arc of Contact	20 N/mm	114.2 lbs./in.
Load for 1% Extension	10 N/mm	57.1 lbs./in.
Maximum Tensile Load	180 N/mm belt width	
Standard tension	0.3-2%	
Operational temperature range	-20/70°C	-4/158°F

Features

FDA	NO	Anti-Static	YES
USDA Meat and Poultry	NO	Flame Retardant	NO
USDA Dairy	NO	Cross Rigid	YES
Anti-Microbial	NO		

Standard Splices

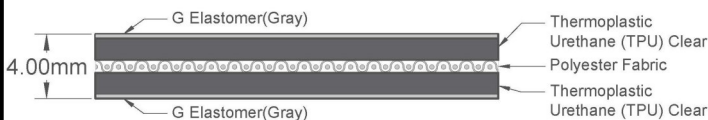
Endless	Single Finger
Clipper Lace	Not Recommended
Staple Lace	Not Recommended

Notes

Not sensitive to climatic fluctuation.
Highly abrasion-resistant elastomer coating.

*Minimum pulley diameters can vary when mechanical lace is installed. Contact our technical team for any fabrication or application questions.

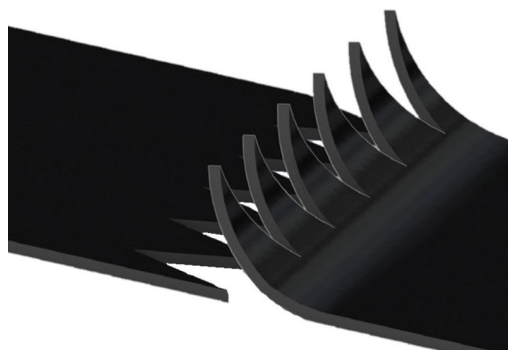
Material Build



Splicing Instructions

Water Cooled Press Settings

Pressure (psi)	Temperature		Press Time	Foil Position	Foil	Release Top/ Bot.
	Top	Bottom				
30	180°C 356°F	180°C 356°F	240s	N/A	None	Silicone/ Silicone



*These settings are a guideline only, every press is different. Test splicing is recommended.

*These settings can also be used as a guideline for quick splice presses, test splicing is still recommended.

