

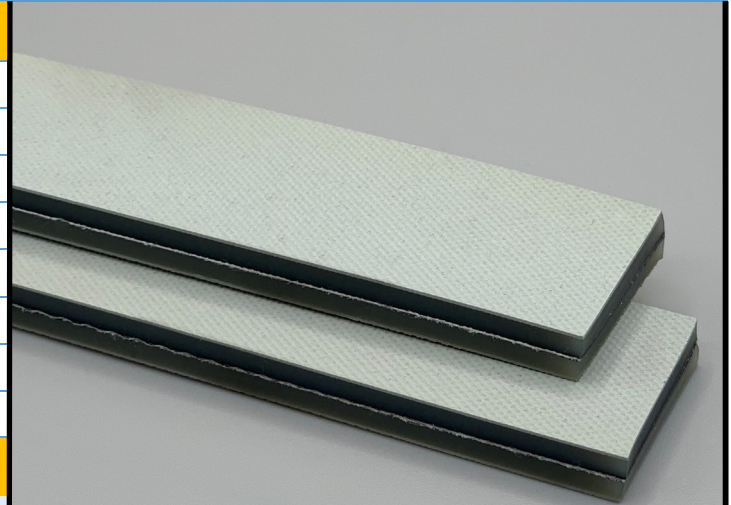
**351015**

**BF 60E Gray**

**PT**

**Material Construction**

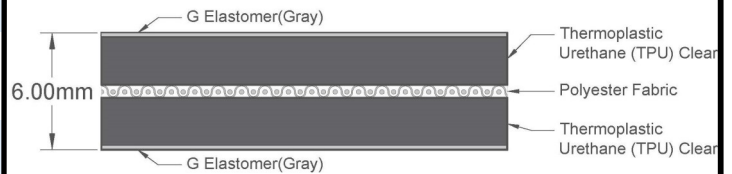
|           |           |          |                  |
|-----------|-----------|----------|------------------|
| Surface   | Conveying | Material | G Elastomer      |
|           |           | Profile  | Normal Texture   |
|           |           | Color    | Gray             |
| Member    | Tension   | Material | Polyester Fabric |
|           |           | Plies    | 1                |
| Underside |           | Material | G Elastomer      |
|           |           | Profile  | Normal Texture   |
|           |           | Color    | Gray             |



**Technical Specifications**

|  |                        |                          |
|--|------------------------|--------------------------|
| Overall thickness                                    | 6.00 mm                | 0.236 in.                |
| Weight   | 6.65 kg/m <sup>2</sup> | 1.36 lbf/ft <sup>2</sup> |
| Maximum width  | 500 mm                 | 19.625 in.               |
| Minimum pulley/Back flex                             | 70 mm                  | 2.76 in.                 |
| Diameter for recommended endless splice              |                        |                          |
| Shaft Load FW at 1% Elongation & 180° Arc of Contact | 20 N/mm                | 114.2 lbs./in.           |
| Load for 1% Extension                                | 10 N/mm                | 57.1 lbs./in.            |
| Maximum Tensile Load                                 | 180 N/mm belt width    |                          |
| Standard tension                                     | 0.3-2%                 |                          |
| Operational temperature range                        | -20/70°C               | -4/158°F                 |

**Material Build**



**Features**

|                       |    |                 |     |
|-----------------------|----|-----------------|-----|
| FDA                   | NO | Anti-Static     | YES |
| USDA Meat and Poultry | NO | Flame Retardant | NO  |
| USDA Dairy            | NO | Cross Rigid     | YES |
| Anti-Microbial        | NO |                 |     |

**Standard Splices**

|              |                 |
|--------------|-----------------|
| Endless      | Single Finger   |
| Clipper Lace | Not Recommended |
| Staple Lace  | Not Recommended |

**Notes**

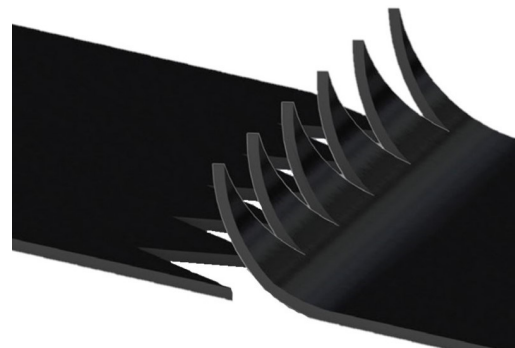
Not sensitive to climatic fluctuation.  
Highly abrasion-resistant elastomer coating.

\*Minimum pulley diameters can vary when mechanical lace is installed. Contact our technical team for any fabrication or application questions.

**Splicing Instructions**

**Water Cooled Press Settings**

| Pressure (psi) | Temperature    |                | Press Time | Foil Position | Foil | Release Top/ Bot.     |
|----------------|----------------|----------------|------------|---------------|------|-----------------------|
|                | Top            | Bottom         |            |               |      |                       |
| 30             | 180°C<br>356°F | 180°C<br>356°F | 300s       | N/A           | None | Silicone/<br>Silicone |



\*These settings are a guideline only, every press is different. Test splicing is recommended.

\*These settings can also be used as a guideline for quick splice presses, test splicing is still recommended.

