



# UNIVERSAL BELTING RESOURCE

## Industrial Lightweight Belting

1-800-928-9995

Customers@Ubelting.com

Product Data Sheet

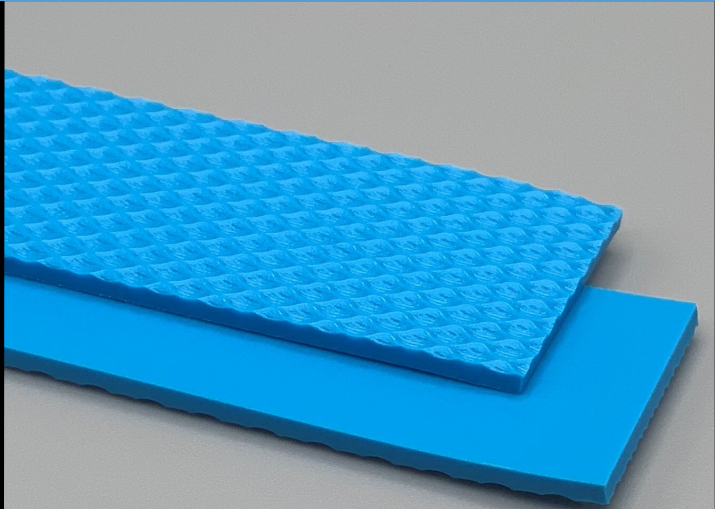
**450117**

**FB2BLSP50 85 Matt Blue**

**PURclean**

### Material Construction

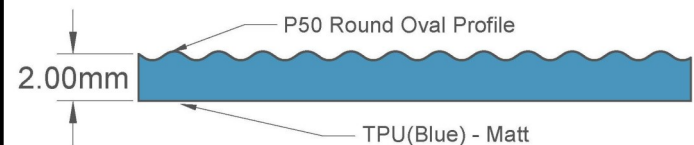
Composition	Material	TPU-Thermoplastic Polyurethane
	Color	Sky Blue
	Hardness (Shore "A")	85
	Tension Member	TPU Non-Reinforced
Surface Feature	Top	P50 Round Oval Profile
	Bottom	Matt
COF	Top	N/A
	Bottom	0.60



### Technical Specifications

Overall Thickness	2.00 mm	0.079 in.
Weight	2.54 kg/m <sup>2</sup>	0.52 lbf/ft <sup>2</sup>
Maximum Width	762 mm	30 in.
Minimum Pulley/Nose Bar		
Diameter For Endless Butt Splice	19 mm	0.748 in.
Minimum Back Flex	19 mm	0.748 in.
Load For 1% Extension	2.0 N/mm	11.42 lbs/in.
Standard Tension	0.75%	
Operational Temperature Range	-9/71°C	16/160°F

### Material Build



### Features

FDA	YES	Anti-Static	NO
USDA Meat and Poultry	YES	Reinforced	NO
USDA Dairy	YES	Elastic	YES

### Standard Fabrications

Cleats	NO	Footless Sidewall	NO
Guide on Top	NO	Footed Sidewall	NO
Guide on Bottom	NO		

\*Minimum pulley diameters can vary when mechanical lace is installed. Contact our technical team for any fabrication or application questions.

### 90° Butt Splice Instructions

#### Water Cooled Press Settings

Pressure (psi)	Temperature		Press Time	Foil Position	Foil	Release Top/Bot.
	Top	Bottom				
30	175 C° 347 F°	175 C° 347 F°	90s	N/A	None	Matte/Impression Pad

\*These settings are a guideline only, every press is different. Test splicing is recommended.

### Standard Splices

Butt Splice	Recommended
Soft Hinge Lace	Not Recommended

#### Alternative Lace Options

Staple Lace	RS62
Plastic Rivet Lace	APF-100

### Notes

Homogeneous urethane construction with round oval profile top surface for excellent release and/or fantastic bite. Can be used upside down for lower friction bottom.

