



# UNIVERSAL BELTING RESOURCE

## Industrial Lightweight Belting

1-800-928-9995

Customers@Ubelting.com

Product Data Sheet

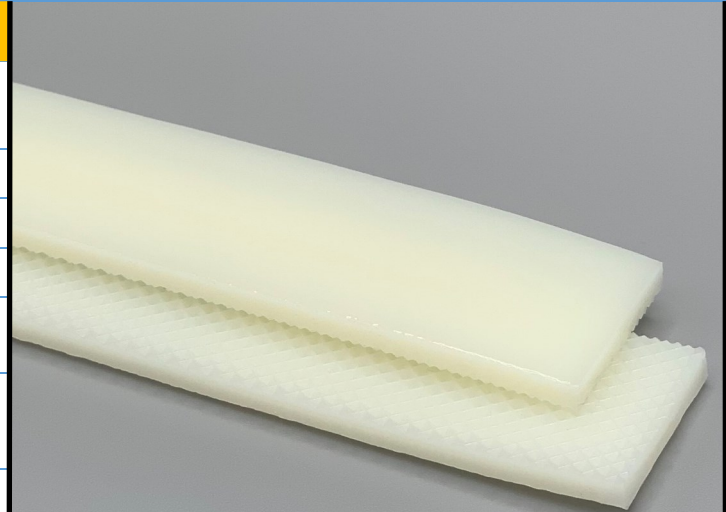
### 450132

### FB3BGES Glossy Beige

### PURclean

#### Material Construction

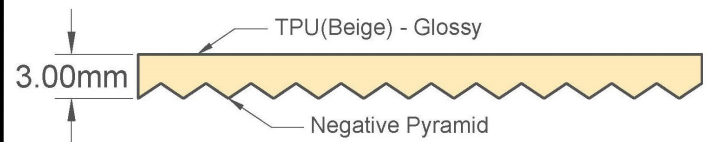
Composition	Material	TPU-Thermoplastic Polyurethane
	Color	Beige
	Hardness (Shore "A")	98
	Tension Member	TPU Non-Reinforced
Surface Feature	Top	Glossy
	Bottom	Negative Pyramid
COF	Top	0.31
	Bottom	0.52



#### Technical Specifications

Overall Thickness	3.00 mm	0.118 in.
Weight	3.37 kg/m <sup>2</sup>	0.69 lbf/ft <sup>2</sup>
Maximum Width	1,524 mm	60 in.
Minimum Pulley/Nose Bar		
Diameter For Endless Butt Splice	40 mm	1.575 in.
Minimum Back Flex	40 mm	1.575 in.
Load For 1% Extension	3.0 N/mm	17.13 lbs/in.
Standard Tension	0.75%	
Operational Temperature Range	-9/71°C	16/160°F

#### Material Build



#### 90° Butt Splice Instructions

##### Standard Amigo Press Settings

\*Follow basic Amigo operating instructions

Pre-heat Temperature	Pre-heat Time	Weld Time
95°C	300 s	50-55 s

\*These settings are a guideline only, every press is different. Test splicing is recommended.

#### Standard Splices

Butt Splice	Recommended
Soft Hinge Lace	Recommended

#### Alternative Lace Options

Staple Lace	RS62
Plastic Rivet Lace	APF-150

#### Notes

Homogeneous urethane construction

#### Features

FDA	YES	Anti-Static	NO
USDA Meat and Poultry	YES	Reinforced	NO
USDA Dairy	YES	Elastic	NO

#### Standard Fabrications

Cleats	YES	Footless Sidewall	YES
Guide on Top	YES	Footed Sidewall	YES
Guide on Bottom	YES		

\*Minimum pulley diameters can vary when mechanical lace is installed. Contact our technical team for any fabrication or application questions.

