



UNIVERSAL BELTING RESOURCE

Industrial Lightweight Belting

1-800-928-9995

Customers@Ubelting.com

Product Data Sheet

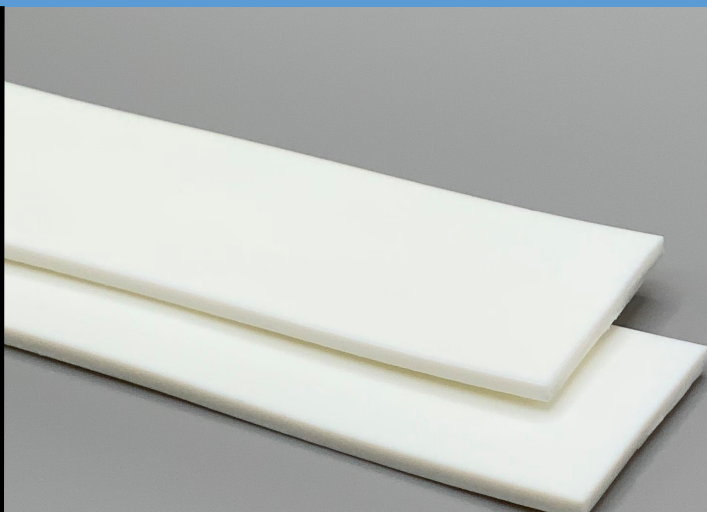
450610

FB2WHSS Matt White 85

PURclean

Material Construction

Composition	Material	TPU-Thermoplastic Polyurethane
	Color	White
	Hardness (Shore "A")	85
	Tension Member	TPU Non-Reinforced
Surface Feature	Top	Matt
	Bottom	Matt
COF	Top	0.60
	Bottom	0.60



Material Build



Technical Specifications

Overall Thickness	2.00 mm	0.079 in.
Weight	2.54 kg/m ²	0.52 lbf/ft ²
Maximum Width	762 mm	30 in.
Minimum Pulley/Nose Bar		
Diameter For Endless Butt Splice	19 mm	0.748 in.
Minimum Back Flex	19 mm	0.748 in.
Load For 1% Extension	2.0 N/mm	11.42 lbs/in.
Standard Tension	0.75%	
Operational Temperature Range	-9/71°C	16/160°F

Features

FDA	YES	Anti-Static	NO
USDA Meat and Poultry	YES	Reinforced	NO
USDA Dairy	YES	Elastic	NO

Standard Fabrications

Cleats	NO	Footless Sidewall	NO
Guide on Top	NO	Footed Sidewall	NO
Guide on Bottom	NO		

*Minimum pulley diameters can vary when mechanical lace is installed. Contact our technical team for any fabrication or application questions.

90° Butt Splice Instructions

Water Cooled Press Settings

Pressure (psi)	Temperature		Press Time	Foil Position	Foil	Release Top/Bot.
	Top	Bottom				
30	175 C° 347 F°	175 C° 347 F°	90s	N/A	None	Matte/Matte

*These settings are a guideline only, every press is different. Test splicing is recommended.

Standard Splices

Butt Splice	Recommended
Soft Hinge Lace	Not Recommended

Alternative Lace Options

Staple Lace	RS62
Plastic Rivet Lace	APF-100

Notes

Homogeneous urethane construction

