



# UNIVERSAL BELTING RESOURCE

## Industrial Lightweight Belting

1-800-928-9995

Customers@Ubelting.com

Product Data Sheet

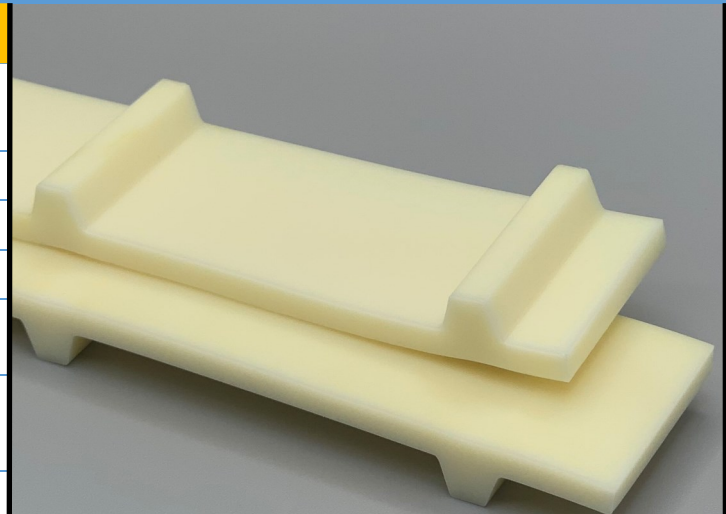
**453220**

**PB3BGSS Matt Beige**

**PURclean**

### Material Construction

Composition	Material	TPU-Thermoplastic Polyurethane
	Color	Beige
	Hardness (Shore "A")	98
	Tension Member	TPU Non-Reinforced
Surface Feature	Top	Matt
	Bottom	Smooth w/ 2" pitch Tooth
COF	Top	0.38
	Bottom	0.38



### Technical Specifications

Overall Thickness	3.43 mm	0.135 in.
Weight	5.12 kg/m <sup>2</sup>	1.05 lbf/ft <sup>2</sup>
Maximum Width	1,524 mm	60 in.
Minimum Pulley/Nose Bar Diameter For Endless Butt Splice	80 mm	3.15 in.
Minimum Back Flex	98 mm	3.858 in.
Load For 1% Extension	3.0 N/mm	17.13 lbs/in.
Standard Tension	0.3%	
Operational Temperature Range	-9/71°C	16/160°F

### Features

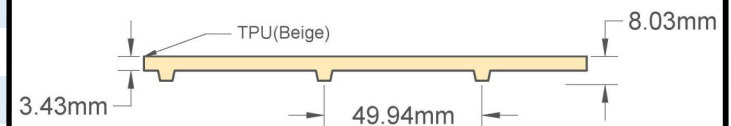
FDA	YES	Anti-Static	NO
USDA Meat and Poultry	YES	Reinforced	NO
USDA Dairy	YES	Elastic	NO

### Standard Fabrications

Cleats	YES	Footless Sidewall	YES
Guide on Top	YES	Footed Sidewall	YES
Guide on Bottom	NO		

\*Minimum pulley diameters can vary when mechanical lace is installed. Contact our technical team for any fabrication or application questions.

### Material Build



### 90° Butt Splice Instructions

#### Standard Amigo Press Settings

\*Follow basic Amigo operating instructions

Pre-heat Temperature	Pre-heat Time	Weld Time
95°C	350-355 s	50-55 s

\*These settings are a guideline only, every press is different. Test splicing is recommended.

### Standard Splices

Butt Splice	Recommended
Soft Hinge Lace	Recommended

#### Alternative Lace Options

Staple Lace	RS125
Plastic Rivet Lace	Not Recommended

### Notes

Homogeneous urethane construction

