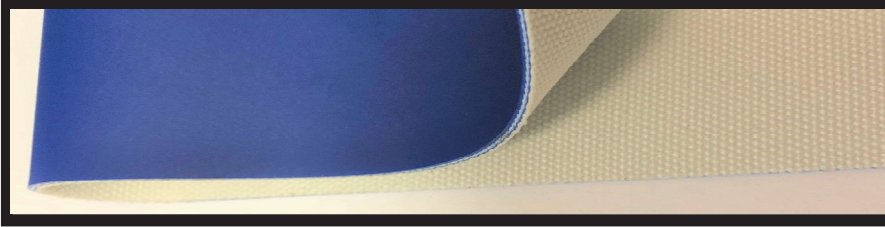




UNIVERSAL BELTING RESOURCE
Working Through Distribution

DISTRIBUTION ANNOUNCEMENT U85/2 ES M COBALT BLUE



Item # 110225
U85/2 ES M COBALT BLUE
"2 ply Blue Spun PU"

Features

- * "Matte" finish surface structure provides good release qualities
- * Quiet spun weave bottom fabric for reduced noise level operation
- * Unique surface combines mid level adhesion with adequate slippage
- * Low reflectivity top surface scatters light and surface glare
- * Durable low drag surface permits scraper use for easy debris removal
- * Spun filament width construction allows for lateral flexibility
- * Spun fabric two ply polyester construction
- * Well accepted food favorable "Blue" FDA construction

Benefits / Applications

- * Great release with a multitude of conveyed consumer products
- * Reduced distraction from noise for safer work environments
- * Provides grip to index or push forward while allowing for lateral aligning
- * Excellent for optical scanning equipment or hand sorting applications
- * Durable PU compound for low maintenance and great longevity
- * Can be used on troughed applications, power turns, and 45° merge transfers
- * Runs more stable on older neglected equipment
- * Acceptable visual quality throughout life and discernable contrasting color

For additional information please contact customer service at
customers@ubelting.com or call 800-928-9995

www.universalbelting.com
customers@ubelting.com

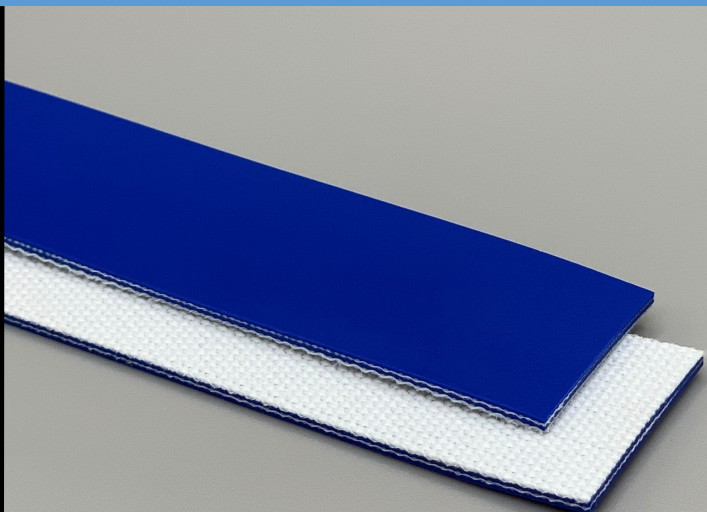
2 Industrial Park Rd
Carmichaels PA 15320
PH: 800-928-9995 FX: 724-966-2452



110225
U85/2 ES M Cobalt Blue
PU

Material Construction

Conveying Surface	Material	PU
	Profile	Matt
	Color	Blue
	Coefficient of friction	N/A
Tension Member	Material	Spun Polyester Fabric
	Plies	2
Underside	Material	Spun Polyester Fabric
	Profile	Impregnated
	Color	White
	Coefficient of friction	0.25



Technical Specifications

Overall Thickness	1.65 mm	0.065 in.
Weight	1.80 kg/m ²	0.37 lbs./ft ²
Maximum Width	3,000 mm	118.125 in.
Minimum Pulley/Nose Bar		
Diameter for Recommended Endless Splice	10.00 mm	0.394 in.
Minimum Back Flex	25.00 mm	0.984 in.
Load for 1% Extension (Dynamic)	8 N/mm	45.68 lbs./in.
Standard Tension		0.5 %
Product Operational Temperature Range	-30/90 °C	-22/194 °F
Cover Durometer	85 Shore A	

Features

FDA	YES	Anti-Static	NO
USDA Meat and Poultry	NO	Flame Retardant	NO
USDA Dairy	NO	Cross Rigid	NO
Anti-Microbial	NO		

Standard Fabrications

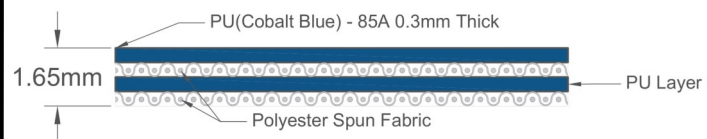
Longitudinal Splice	NO	Cleats	YES
Guide Applied to Cover	YES	Guide Applied to Bottom	YES
Footed Sidewall	YES	Footless Sidewall	NO
Edge Capped	YES	Plastic Spiral Lace	YES

Notes

2 ply spun fabric matte top cover. Suitable for curve belts, metal detectors, general bakery and confectionary lines. Excellent for older and problematic equipment.

*Minimum pulley diameters can vary when mechanical lace is installed. Contact our technical team for any fabrication or application questions.

Material Build



Splicing Instructions

High Speed Press Settings

Pressure (psi)	Temperature		Press Time	Foil Position	Foil	Release Top/Bot.
	Top	Bottom				
25	74°C 165°F	74°C 165°F	90 s	N/A	None	Matte/ Rough Teflon

Water Cooled Press Settings

Pressure (psi)	Temperature		Press Time	Foil Position	Foil	Release Top/Bot.
	Top	Bottom				
25	74°C 165°F	74°C 165°F	45 s	N/A	None	Matte/ Rough Teflon

*These settings are a guideline only, every press is different. Test splicing is recommended.

Standard Splices

Endless	Single Finger
Clipper Lace	UCM36SL SP
Staple Lace	RS62