



UNIVERSAL BELTING RESOURCE
Working Through Distribution

DISTRIBUTION ANNOUNCEMENT

3P180/30/0 AS M GREEN



Item # 266301
3P180/30/0 AS M GREEN
3 ply High Grip PVC
Corrugated Box Folding Belt

Features

- * 6 mm thick heavy duty 3 ply PVC construction
- * Soft high grip PVC covers maintain superior grip
- * High quality PVC compound provides positive handling throughout service life
- * Monofilament construction absorbs application impact and shock often seen on folders
- * Can be provided standard or with in house perforations including single or dual hole configurations
- * PVC construction can offer significant savings over competitors rough top and rubber covered alternatives
- * Top choice on many wood applications

Benefits / Applications

- * Perfect for Folding Rail Belts on Corrugated Carton applications
- * Helps to prevent carton skewing and equipment jams
- * Unlike rough tops that loose grip once tips wear off 266301 maintains grip from beginning to end
- * Lacing holds better than some of the competitor multifilament fabrics that transfer higher shock to the lace
- * Perforations are quickly provided with in house fabrication tools for prompt delivery times
- * Many have found better performance and longevity using this product on corrugated folders
- * Excellent wear and positive grip

For additional information please contact customer service at
customers@ubelting.com or call 800-928-9995

www.universalbelting.com
customers@ubelting.com

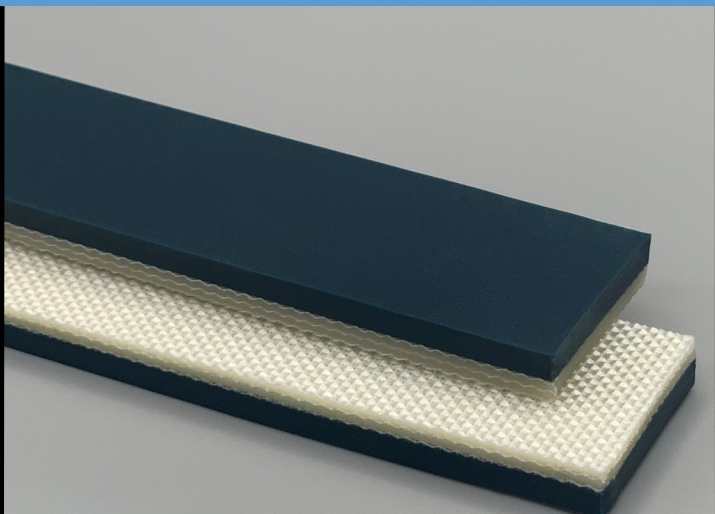
2 Industrial Park Rd
Carmichaels PA 15320
PH: 800-928-9995 FX: 724-966-2452



266301
3P180/30/0 AS M Green
PVC

Material Construction

Conveying Surface	Material	PVC
	Profile	Matt
	Color	Dark Green
	Coefficient of friction	N/A
Tension Member	Material	Polyester Fabric
	Plies	3
Underside	Material	Polyester fabric
	Profile	Impregnated
	Color	White
	Coefficient of friction	0.25



Technical Specifications

Overall Thickness	6.00 mm	0.236 in.
Weight	7 kg/m ²	1.43 lbs./ft ²
Maximum Width	2,000 mm	78.75 in.
Minimum Pulley/Nose Bar		
Diameter for Recommended Endless Splice	150 mm	5.906 in.
Minimum Back Flex	200 mm	7.874 in.
Load for 1% Extension (Dynamic)	18 N/mm	102.78 lbs./in.
Standard Tension		0.5 %
Product Operational Temperature Range	-10/70 °C	14/158 °F
Cover Durometer		35 Shore A

Features

FDA	NO	Anti-Static	YES
USDA Meat and Poultry	NO	Flame Retardant	NO
USDA Dairy	NO	Cross Rigid	YES
Anti-Microbial	NO		

Standard Fabrications

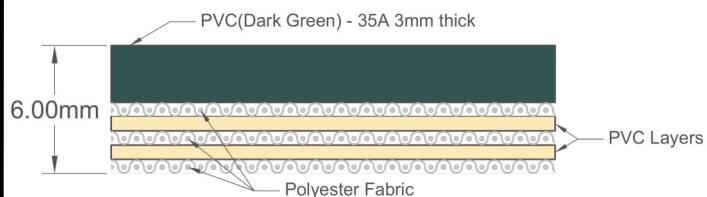
Longitudinal Splice	YES	Cleats	NO
Guide Applied to Cover	NO	Guide Applied to Bottom	YES
Footed Sidewall	NO	Footless Sidewall	NO
Edge Capped	NO	Plastic Spiral Lace	YES

Notes

3 Ply Monofilament - cover one side

*Minimum pulley diameters can vary when mechanical lace is installed. Contact our technical team for any fabrication or application questions.

Material Build



Splicing Instructions

High Speed Press Settings

Pressure (psi)	Temperature		Press Time	Foil Position	Foil	Release Top/Bot.
	Top	Bottom				
N/A	N/A°C N/A°F	N/A°C N/A°F	N/A s	N/A	N/A	N/A/N/A

Water Cooled Press Settings

Pressure (psi)	Temperature		Press Time	Foil Position	Foil	Release Top/Bot.
	Top	Bottom				
30	79°C 175°F	79°C 175°F	180 s	Top	Green PVC	Matte/ Rough Teflon

*These settings are a guideline only, every press is different. Test splicing is recommended.

Standard Splices

Endless	Finger Over Finger
Clipper Lace	U4
Staple Lace	RS125 Recessed