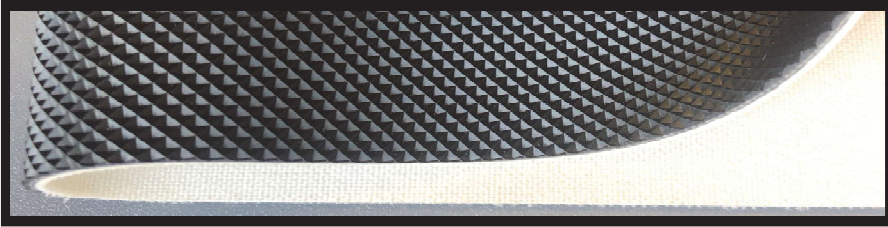




**UNIVERSAL BELTING RESOURCE**  
*Working Through Distribution*

## DISTRIBUTION ANNOUNCEMENT 2PN40/NPY/0 BLACK



Item # 267102  
2PN40/NPY/0 BLACK  
"2 ply Black  
Inverted Pyramid"

### Features

- \* "Negative diamond" top surface
- \* Low noise quiet weave bottom fabric
- \* Low durometer 45 Shore A PVC cover surface
- \* Low reflectivity top surface scatters light and surface glare
- \* High grip PVC cover
- \* Spun polyester top and bottom fabric construction
- \* Highly flexible two ply construction
- \* Black surface does not show dirt
- \* Non-rigid width construction for lateral bending and flexing

### Benefits / Applications

- \* Helps maintain grip in dusty conditions
- \* Reduced noise for safer environments
- \* Dependable transfer, feeding & accelerating of materials
- \* Excellent for visual & optical scanning equipment, or hand sorting applications
- \* Reduces slippage for longer belt life
- \* Operates correctly on 45 degree merge belts in distribution centers
- \* Strong yet perfect for small transfers
- \* Eliminates need for frequent cleaning
- \* Can be used on troughed applications, power turns, and merge transfers

For additional information please contact customer service at  
[customers@ubelting.com](mailto:customers@ubelting.com) or call 800-928-9995

[www.universalbelting.com](http://www.universalbelting.com)  
[customers@ubelting.com](mailto:customers@ubelting.com)

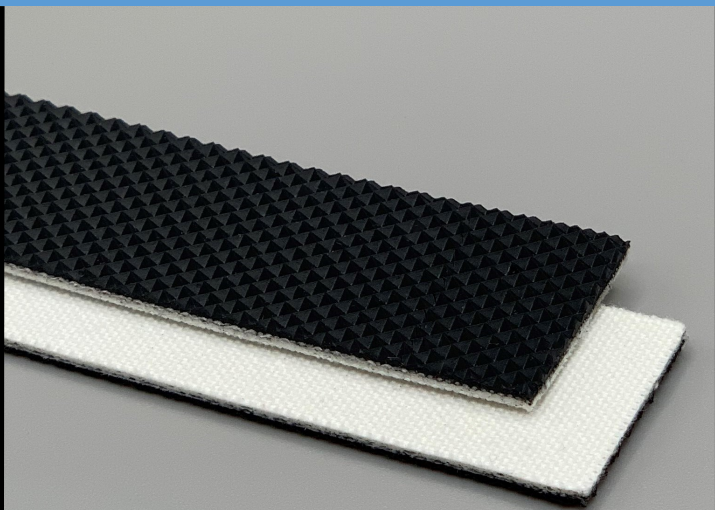
2 Industrial Park Rd  
Carmichaels PA 15320  
PH: 800-928-9995 FX: 724-966-2452



**267102**
**2PN40/NPY/0 AS Black**
**PVC**

### Material Construction

Conveying Surface	Material	PVC
	Profile	Negative Pyramid
	Color	Black
	Coefficient of friction	N/A
Tension Member	Material	Polyester Fabric
	Plies	2
Underside	Material	Polyester Staple Fabric
	Profile	Low Noise
	Color	White
	Coefficient of friction	0.25



### Technical Specifications

Overall Thickness	2.10 mm	0.083 in.
Weight	2 kg/m <sup>2</sup>	0.41 lbs./ft <sup>2</sup>
Maximum Width	3,073 mm	121 in.
Minimum Pulley/Nose Bar		
Diameter for Recommended Endless Splice	30 mm	1.181 in.
Minimum Back Flex	40 mm	1.575 in.
Load for 1% Extension (Dynamic)	4 N/mm	22.84 lbs./in.
Standard Tension		0.5 %
Product Operational Temperature Range	-10/70 °C	14/158 °F
Cover Durometer	45 Shore A	

### Features

FDA	NO	Anti-Static	YES
USDA Meat and Poultry	NO	Flame Retardant	NO
USDA Dairy	NO	Cross Rigid	NO
Anti-Microbial	NO		

### Standard Fabrications

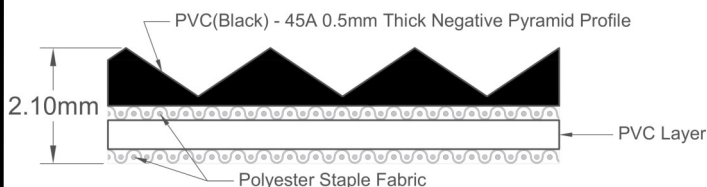
Longitudinal Splice	YES	Cleats	YES
Guide Applied to Cover	NO	Guide Applied to Bottom	YES
Footed Sidewall	NO	Footless Sidewall	NO
Edge Capped	YES	Plastic Spiral Lace	YES

### Notes

Quiet running and extremely flexible, this product is highly suited for 45 degree logistics transfers, carrier cells, packaging applications, troughing requirements, inclines and a variety of general transport needs where positive top side grip is needed.

\*Minimum pulley diameters can vary when mechanical lace is installed. Contact our technical team for any fabrication or application questions.

### Material Build



### Splicing Instructions

#### High Speed Press Settings

Pressure (psi)	Temperature		Press Time	Foil Position	Foil	Release Top/Bot.
	Top	Bottom				
30	79°C 175°F	79°C 175°F	240 s	Top	Black PVC	Impression Pad/Rough Teflon

#### Water Cooled Press Settings

Pressure (psi)	Temperature		Press Time	Foil Position	Foil	Release Top/Bot.
	Top	Bottom				
30	79°C 175°F	77°C 170°F	210 s	Top	Black PVC	Impression Pad/Rough Teflon

\*These settings are a guideline only, every press is different. Test splicing is recommended.

### Standard Splices

Endless	Single Finger
Clipper Lace	UCM36 SP
Staple Lace	RS62