



UNIVERSAL BELTING RESOURCE
Working Through Distribution

DISTRIBUTION ANNOUNCEMENT

**“M3 Matte Top”
2PL100/05/0 AS FR M3 BK**



**Item # 268250
2PL100/05/0 AS FR M3 BK
“2 ply M3 Matte top”**

Features

- * Perfect mix of slip and grip
- * M3 Matte finish top surface
- * Optimum coefficient friction top finish
- * 2 ply highly flexible construction
- * Whisper weave bottom fabric
- * Highly compatible black top finish
- * Neutral product color
- * Rigid lay-flat fabric construction
- * Static dissipating design
- * High quality long lasting top surface
- * Embedded antistatic filaments
- * High strength polyester construction
- * Designed for logistics transport
- * Multiple fabrication options
- * ISO 340 Flame retardant

Benefits / Applications

- * Perfect for flat to incline conveyors
- * Allows for side loading + incline grip
- * Reduces product slip on small inclines
- * Helps to reduce conveyor maintenance
- * Helps to maintain a safe work area
- * Versatile with wide range of scanners
- * Acceptable with nearly all equipment
- * Avoids edge curl sensor interference
- * Avoid product cling, jams & downtime
- * Reduce frequent replacement costs
- * Protects sensitive equipment & operator
- * No re-tensioning - low maintenance**
- * Field proven performance
- * Spliced, metal or spiral laced, etc.
- * Helps meet operational safeguards

**For additional information please contact customer service at
customers@ubelting.com or call 800-928-9995**

**www.universalbelting.com
customers@ubelting.com**

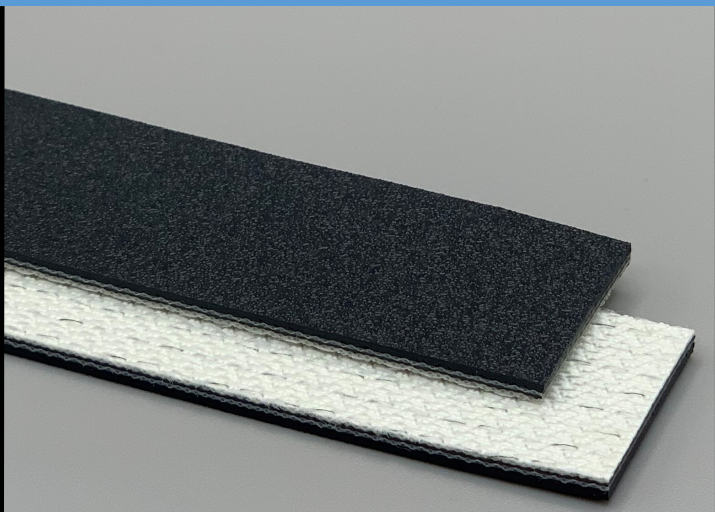
**2 Industrial Park Rd
Carmichaels PA 15320
PH: 800-928-9995 FX: 724-966-2452**



268250
2PL100/05/0 AS FR M3 Black
PVC

Material Construction

Conveying Surface	Material	PVC
	Profile	M3 Coarse Matt Finish
	Color	Black
	Coefficient of friction	N/A
Tension Member	Material	Polyester Fabric
	Plies	2
Underside	Material	Whisper weave polyester
	Profile	Impregnated / Low Noise
	Color	White
	Coefficient of friction	0.20



Technical Specifications

Overall Thickness	2.50 mm	0.098 in.
Weight	2.6 kg/m ²	0.53 lbs./ft ²
Maximum Width	3,000 mm	118.125 in.
Minimum Pulley/Nose Bar		
Diameter for Recommended Endless Splice	50 mm	1.969 in.
Minimum Back Flex	60 mm	2.362 in.
Load for 1% Extension (Dynamic)	10 N/mm	57.10 lbs./in.
Standard Tension		0.5 %
Product Operational Temperature Range	-10/80 °C	14/176 °F
Cover Durometer	80 Shore A	

Features

FDA	NO	Anti-Static	YES
USDA Meat and Poultry	NO	Flame Retardant	YES
USDA Dairy	NO	Cross Rigid	YES
Anti-Microbial	NO		

Standard Fabrications

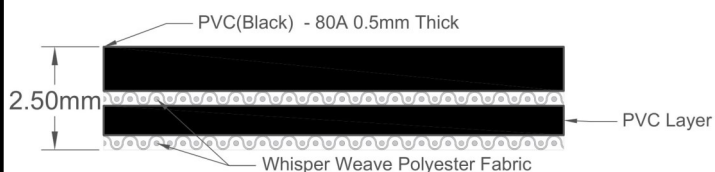
Longitudinal Splice	YES	Cleats	YES
Guide Applied to Cover	YES	Guide Applied to Bottom	YES
Footed Sidewall	YES	Footless Sidewall	NO
Edge Capped	YES	Plastic Spiral Lace	YES

Notes

Energy saving product with quiet running whisper weave bottom and heavy matte finish top. Great for warehouse and logistics applications. Product is ISO-340 flame retardant compliant

*Minimum pulley diameters can vary when mechanical lace is installed. Contact our technical team for any fabrication or application questions.

Material Build



Splicing Instructions

High Speed Press Settings

Pressure (psi)	Temperature		Press Time	Foil Position	Foil	Release Top/Bot.
	Top	Bottom				
30	79°C 175°F	79°C 175°F	420 s	Top	Black PVC	Matte/ Rough Teflon

Water Cooled Press Settings

Pressure (psi)	Temperature		Press Time	Foil Position	Foil	Release Top/Bot.
	Top	Bottom				
30	79°C 175°F	77°C 170°F	360 s	Top	Black PVC	Matte/ Rough Teflon

*These settings are a guideline only, every press is different. Test splicing is recommended.

Standard Splices

Endless	Single Finger
Clipper Lace	UCM36
Staple Lace	RS62