



**UNIVERSAL BELTING RESOURCE**  
*Working Through Distribution*

## DISTRIBUTION ANNOUNCEMENT

**Longitudinal Rib Top  
2PL100/GP/0 AS FR BLK 2.8MM**



**Item # 268255  
2PL100/GP/0 AS FR BLK 2.8MM  
"2 ply longitudinal rib top"**

### Features

- \* Longitudinal profiled top surface
- \* Extreme grip low durometer cover
- \* 2 ply highly flexible construction
- \* Whisper weave bottom fabric
- \* Highly compatible black top finish
- \* Neutral product color
- \* Rigid lay-flat fabric construction
- \* Static dissipating design
- \* High quality long lasting top surface
- \* Embedded antistatic filaments
- \* High strength polyester construction
- \* Designed for logistics transport
- \* Multiple fabrication options
- \* ISO 340 Flame retardant

\*\*Proper installation tension required. Contact factory if assistance needed.

### Benefits / Applications

- \* Low maintenance self cleaning
- \* Reduces chance of slip on inclines
- \* Helps to reduce conveyor maintenance
- \* Helps to maintain a safe work area
- \* Versatile with wide range of scanners
- \* Acceptable with nearly all equipment
- \* Avoids edge curl sensor interference
- \* Avoid product cling, jams & downtime
- \* Reduce frequent replacement costs
- \* Protects sensitive equipment & operator
- \* No re-tensioning - low maintenance\*\*
- \* Field proven performance
- \* Spliced, metal or spiral laced, etc.
- \* Helps meet operational safeguards

**For additional information please contact customer service at  
[customers@ubelting.com](mailto:customers@ubelting.com) or call 800-928-9995**

**[www.universalbelting.com](http://www.universalbelting.com)  
[customers@ubelting.com](mailto:customers@ubelting.com)**

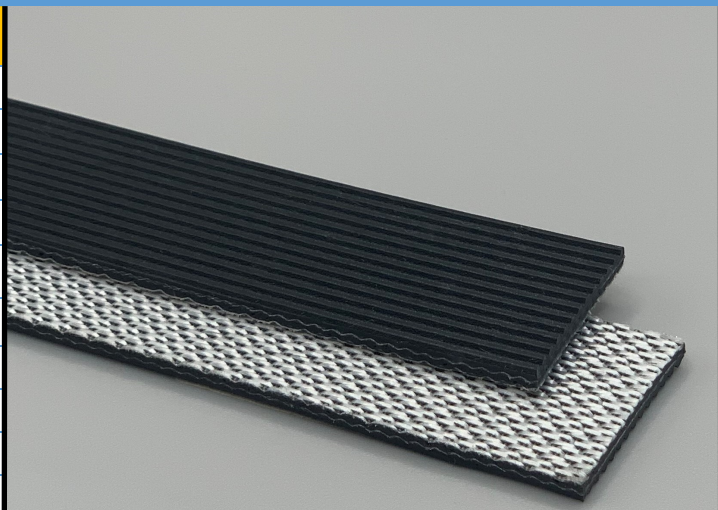
**2 Industrial Park Rd  
Carmichaels PA 15320  
PH: 800-928-9995 FX: 724-966-2452**



**268255**
**2PL100/GP/0 AS FR Black**
**PVC**

### Material Construction

Conveying Surface	Material	PVC
	Profile	Longitudinal ribbed
	Color	Black
	Coefficient of friction	N/A
Tension Member	Material	Polyester Fabric
	Plies	2
Underside	Material	Whisper weave polyester
	Profile	Impregnated / Low Noise
	Color	White
	Coefficient of friction	0.25



### Technical Specifications

Overall Thickness	2.80 mm	0.11 in.
Weight	3 kg/m <sup>2</sup>	0.61 lbs./ft <sup>2</sup>
Maximum Width	3,000 mm	118.125 in.
Minimum Pulley/Nose Bar		
Diameter for Recommended Endless Splice	50 mm	1.969 in.
Minimum Back Flex	60 mm	2.362 in.
Load for 1% Extension (Dynamic)	8 N/mm	45.68 lbs./in.
Standard Tension		0.5 %
Product Operational Temperature Range	-10/70 °C	14/158 °F
Cover Durometer	40 Shore A	

### Features

FDA	NO	Anti-Static	YES
USDA Meat and Poultry	NO	Flame Retardant	YES
USDA Dairy	NO	Cross Rigid	YES
Anti-Microbial	NO		

### Standard Fabrications

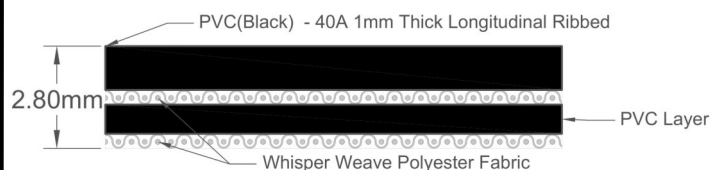
Longitudinal Splice	YES	Cleats	YES
Guide Applied to Cover	NO	Guide Applied to Bottom	YES
Footed Sidewall	NO	Footless Sidewall	NO
Edge Capped	YES	Plastic Spiral Lace	YES

### Notes

Energy saving product with quiet running whisper weave bottom and high grip longitudinal ribbed top. Great for incline and decline applications. Product is ISO-340 flame retardant compliant

\*Minimum pulley diameters can vary when mechanical lace is installed. Contact our technical team for any fabrication or application questions.

### Material Build



### Splicing Instructions

#### High Speed Press Settings

Pressure (psi)	Temperature		Press Time	Foil Position	Foil	Release Top/Bot.
	Top	Bottom				
30	79°C 175°F	79°C 175°F	360 s	Top	Black PVC	Impression Pad/Rough Teflon

#### Water Cooled Press Settings

Pressure (psi)	Temperature		Press Time	Foil Position	Foil	Release Top/Bot.
	Top	Bottom				
30	82°C 180°F	77°C 170°F	240 s	Top	Black PVC	Impression Pad/Rough Teflon

\*These settings are a guideline only, every press is different. Test splicing is recommended.

### Standard Splices

Endless	Single Finger
Clipper Lace	UCM36
Staple Lace	RS62